

FILED this 11th day of Sept. 20 14
2:50 PM
CAROL HOLCOMB
COUNTY CLERK, CALDWELL COUNTY, TEXAS
By Allison Ferry Deputy

Notice of Meeting
Commissioners Court of Caldwell County, Texas

Notice is hereby given that a meeting of the Caldwell County Commissioners Court will be held on the 15th day of September, 2014 at 9:00 A.M. in the Commissioners Courtroom located at 1403 Blackjack Street, Lockhart, Texas at which time the following subjects will be discussed, considered, passed or adopted, to wit:

Note: Commissioners Court Meeting packets are prepared several days prior to each meeting. This information is reviewed and studied by the Court members, eliminating lengthy discussions to gain a basic understanding. Timely action and short discussion on agenda items does not reflect lack of thought or analysis on the part of the Court.

Start times for regular agenda items are tentative; some items may be held earlier or later than the scheduled time.

For the convenience and comfort of members of the public and Caldwell County officials and employees, the Commissioners Court may take a recess from 10:30-10:45 a.m. and from noon to 1:30 p.m.

Agenda

Call Meeting to order.

2014.09.15.01 Invocation. Lockhart Ministry Alliance.

2014.09.15.02 Pledge of Allegiance to the Flags. (Texas Pledge: Honor the Texas flag; I pledge allegiance to thee, Texas, one state under God, one and indivisible).

2014.09.15.03 Announcements: Items or comments from Court Members or Staff.

2014.09.15.04 Citizens' Comments: At this time any person may speak to Commissioners Court if they have filled out a Caldwell County Commissioners Court Participation Form. Comments will be limited to four (4) minutes per person. No action will be taken on these items and no discussion will be had between the speaker(s) and members of the Court. The Court does retain the right to correct factual inaccuracies made by the speakers. (If longer than 30 minutes, then the balance of comments will continue as the last agenda item of the day).

2014.09.15.05 Consent Agenda. (Any member of the Court may request that an item within the Consent Agenda to be moved to the Regular Agenda for further discussion and action).

A. To approve Commissioners Court Minutes for September 4th and September 8th, 2014.

- B. To approve new carpet for Juvenile Probation department, 202 E. San Antonio Street. **Cost: \$8,767.00.**
- C. To approve the revised Engineering Consultant Selection Process as requested by TxDOT.
- D. To authorize the County Judge to issue a Notice of Intent (NOI) to contract for consultant engineering services for design of the four county road projects approved by TxDOT for upgrading with SH 130 Concession Funds and to establish a consultant evaluation and selection committee.

2014.09.15.06 Reports.

Federal Inmate Report – Larry Roberson
 General Fund Operating Statement – Larry Roberson
 Sales Tax Report – Larry Roberson
 Tax Collection Report – Larry Roberson
 Unit Road Systems Report – Dwight Jeffrey
 San Marcos River Fest – Labor Day weekend – Martin Ritchey

2014.09.15.07 Special Presentations. None.

(ALL OTHER AGENDA ITEMS)

2014.09.15.08 Discussion/Action regarding Burn Ban for Caldwell County. **Cost:** None; **Speaker:** Martin Ritchey; **Backup:** None.

2014.09.15.09 Discussion/Action to open bids for Aggregate, Asphalt Materials, Flexible Base, Fuel (Regular Unleaded and #2 Diesel), Oil & Lubricants for the budget year 2014-2015. **Cost:** None; **Speaker:** Judge Bonn/Larry Roberson/Dwight Jeffrey; **Backup:** 1.

2014.09.15.10 Discussion/Action to approve use of the property around the Scott Annex building for display of gardening vegetables, flowers, and possible rain collection units. Funding provided by Master Gardner Chapter. **Cost:** None; **Speaker:** Commissioner Muñoz; **Backup:** None.

2014.09.15.11 Discussion/Action to approve an Order authorizing the filing of a Final Plat (Short Form Procedure) for Hinds Acres. (3.0 acres out of the James Hinds Survey A-14). **Cost:** None; **Speaker:** Commissioner Buchholtz/Kasi Miles; **Backup:** 1.

2014.09.15.12 Discussion/Action to pay Nick Dornak a stipend of \$500 per month effective fiscal year 2014-15 starting 10/1/14 to administer the Caldwell County Feral Hog Task Force with the provision that any grants or donations awarded to or solicited by Mr. Dornak on behalf of the Task force will be issued to Caldwell County and utilized by the County to (1) offset the cost of the stipend, and (2) support continued implementation of the Caldwell County Feral Hog Action Plan. **Cost:** \$500 per month; **Speaker:** Commissioner Muñoz; **Backup:** None.

- 2014.09.15.13 Discussion/Action** to post notice for a public hearing for the consideration of setting a specified speed limit on County Road 172 in Lytton Springs. **Cost:** None; **Speaker:** Commissioner Roland; **Backup:** None.
- 2014.09.15.14 Discussion** regarding update on the status of appraisal report from Menn & Associates for the tax office at 100 E. Market Street and the judicial center at 201 E. San Antonio Street as approved at commissioners court on July 28, 2014. **Cost:** None; **Speaker:** Judge Bonn/Larry Roberson; **Backup:** 1.
- 2014.09.15.15 Discussion/Action** to suspend all pay raises until we can get an official document in writing by the Sheriff that will not negatively affect our 2014-2015 budget. **Cost:** None; **Speaker:** Commissioner Buchholtz; **Backup:** None.
- 2014.09.15.16 Adjournment**

As authorized by the Texas Government Code, the Commissioners' Court of Caldwell, County, Texas reserves the right to adjourn into Executive Session at any time during the course of this meeting to discuss any of the matters listed above as they may relate to Texas Government Code Section 551.071(1) (Consultation with Attorney about pending or contemplated litigation or settlement offers);

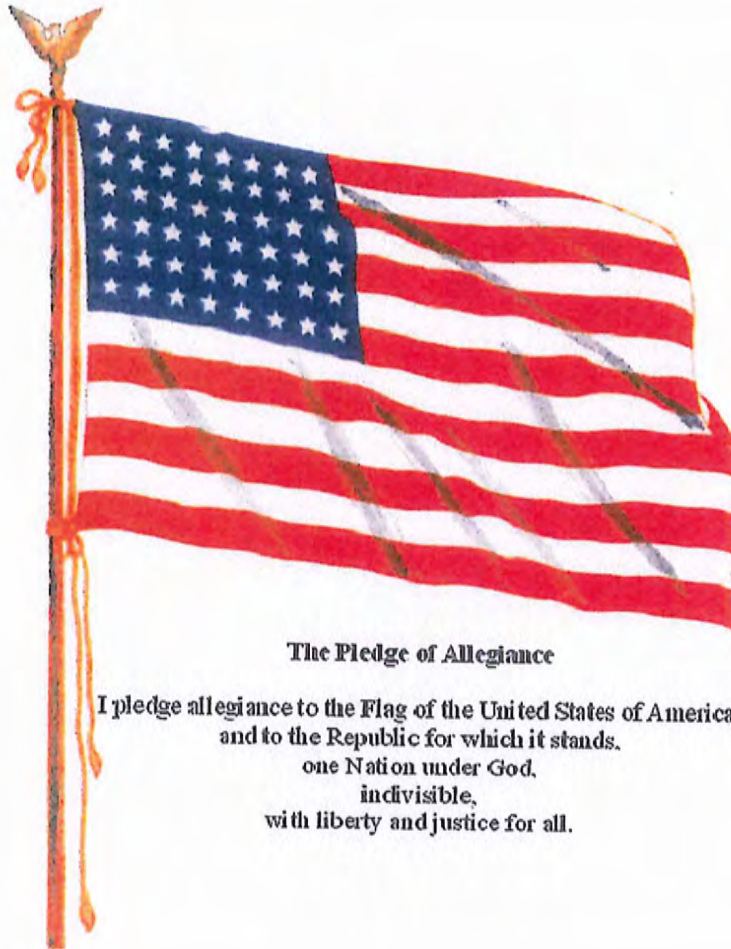
Texas Government Code Section 551.071(2) (Consultation with Attorney when the Attorney's obligations under the Texas Disciplinary Rules of Professional Conduct of the State Bar of Texas conflicts with Chapter 551 of the Texas Government Code);

Texas Government Code Section 551.072 (Deliberations About Real Property); Texas Government Code Section 551.073 (Deliberations about Gifts and Donations); Texas Government Code Section 551.074 (Personnel Matters); Texas Government Code Section 551.0745 (Deliberations about a County Advisory Body); Texas Government Code Section 551.076 (Deliberations about Security Devices); and Texas Government Code Section 551.087 (Economic Development Negotiations).

In the event that the Court adjourns into Executive Session, unless otherwise specified on the agenda, the Court will announce any other parties who are authorized to be present during the deliberations in Executive Session and will announce under what section of the Texas Government Code the Commissioner's Court is using as its authority to enter into an Executive Session. The meeting facility is wheelchair accessible and accessible parking spaces are available. Request for accommodations or interpretive services must be made 48 hours prior to this meeting. Please contact the County Judge's office at 512-398-1808 for further information.

Invocation – Lockhart Ministry Alliance

Pledge of Allegiance to the Flag.



The Pledge of Allegiance

I pledge allegiance to the Flag of the United States of America,
and to the Republic for which it stands,
one Nation under God,
indivisible,
with liberty and justice for all.

**(Texas Pledge: Honor the Texas flag;
I pledge allegiance to thee, Texas,
one state under God, one and
indivisible).**

Pledge to the Texas Flag



Honor the Texas
Flag; I pledge
allegiance to thee,
Texas, one state
under God, one and
indivisible

Announcements:

**Items or comments from Court
Members or Staff.**

Citizens' Comments:

At this time any person may speak to Commissioners Court if they have filled out a Caldwell County Commissioners Court Participation Form. Comments will be limited to four (4) minutes per person. No action will be taken on these items and no discussion will be had between the speaker(s) and members of the Court. The Court does retain the right to correct factual inaccuracies made by the speakers. (If longer than 30 minutes, then the balance of comment will continue as the last agenda item of the day).

2014.09.15.05 Consent Agenda.

(Any member of the Court may request that an item within the Consent Agenda to be moved to the Regular Agenda for further discussion and action).

A.

CALDWELL COUNTY
COMMISSIONERS COURT MINUTES
1403 Blackjack Street, Lockhart, Texas
Special Meeting September 4, 2014 3:00 p.m.



TOM D. BONN County Judge
CAROL HOLCOMB County Clerk

ALFREDO MUÑOZ Commissioner Pct. 1
FRED F. BUCHHOLTZ Commissioner Pct.2
NETO MADRIGAL Commissioner Pct. 3
JOE IVAN ROLAND Commissioner Pct.4

Call Meeting to order.

- 2014.09.04.01 Invocation.** Lockhart Ministry Alliance.
No minister present. Oscar Fogle opened the meeting with prayer.
- 2014.09.04.02 Pledge of Allegiance to the Flags.** (Texas Pledge: Honor the Texas flag; I pledge allegiance to thee, Texas, one state under God, one and indivisible).
Judge Bonn led all present in the Pledge to both Flags.
- 2014.09.04.03 Announcements:** Items or comments from Court Members or Staff.
None
- 2014.09.04.04 Citizens' Comments:** At this time any person may speak to Commissioners Court if they have filled out a Caldwell County Commissioners Court Participation Form. Comments will be limited to four (4) minutes per person. No action will be taken these items and no discussion will be had between the speaker(s) and members of the Court. The Court does retain the right to correct factual inaccuracies made by the speakers. (If longer than 30 minutes, then the balance of comments will continue as the last agenda item of the day).
None

Public Hearing begins: 3:02 p.m.

- 2014.09.04.05 Public Hearing 3:00 P.M. on 2014-2015 Caldwell County Tax Rate.**
The Commissioners Court of Caldwell County will vote on the proposed tax rate at its regular meeting at 9:00 a.m., Monday, September 8, 2014 in the Commissioners Courtroom located at 1403 Blackjack Street, Lockhart, Texas.
1. Susan Stewart asked for the Court to keep the present tax rate and not to cut it. If keeping it at present rate would be enough to give the employees a raise, she is willing to pay a little more on taxes.

Public Hearing Closed: 3:04 p.m.

- 2014.09.04.06 Discussion** regarding the property tax increase reflected in the budget as required by section 111.008(c) of the Local Government Code because the budget will require raising more revenue from property taxes than in the previous year.
County Auditor Larry Roberson explained the property tax increase reflected in the budget as required by section 111.008(c) of the Local Government Code. The budget will require raising more revenue from property taxes than in the previous year. Some of it is associated with new property.
- 2014.09.04.09 Discussion/Action** to approving hiring a new employee for the new Caldwell County Justice Center.
Motion made by Commissioner Roland, second by Commissioner Madrigal not to hire a new employee for the new Caldwell County Justice Center at a cost of \$36,367. All Voting "Aye"
- 2014.09.04.10 Discussion/Action** to approve additional cleaning machinery for the new Justice Center.
Motion made by Commissioner Roland, second by Commissioner Madrigal not to buy additional cleaning machinery for the new Justice Center at a cost of \$24,970. This was due not only to cost but because of the size of the machine. All Voting "Aye"

COMMISSIONERS COURT MINUTES
Special Meeting on September 4, 2014

Brief recess 3:11 p.m. to 3:30 p.m.

Public Hearing begins: 3:30 p.m.

2014.09.04.07 Public Hearing 3:30 P.M. on 2014-2015 Caldwell County Proposed Budget.

No Speakers

Public Hearing ends: 3:31 p.m.

2014.09.04.08 Discussion/Action to approve the 2014-2015 Caldwell County Proposed Budget as required by section 111.008(a) of the Local Government Code. Pursuant to section 111.008(b), the commissioner's court may make any changes in the proposed budget that it considers warranted by the law and required by the interest of the taxpayers. **NOTE:** The vote to adopt the budget must be a roll call vote. **Cost:** None; **Speaker:** Judge Bonn; **Backup:** 1.

Motion made by Commissioner Madrigal, second by Commissioner Muñoz to cut the engineer position out of the budget and have half of the amount kept for an engineer on a consultant basis and Commissioner Muñoz said that he would continue with Michael Aulick as the consultant as needed for 5-6 months. Judge Bonn comments that Michael Aulick is not an engineer and is contracted at \$5,000 per month He is concerned that the County does not have an engineer and that with the major road projects that have been approved, the County is in need. Commissioner Roland asks if the proposed budget is balanced at this time? County Auditor replied yes. He explained the line item transfers that will be done when any changes are approved. Motion made by Judge Bonn to table this item. Motion died for lack of second. Roll Call Vote: Commissioner Muñoz-Yes, Commissioner Buchholtz-No, Commissioner Madrigal-Yes, Commissioner Roland-Yes, Judge Bonn-No, Motion Passed. The salary for the County Judge will be adjusted \$11, 250.00 due to the State stipend for Probate. Commissioner Muñoz would like to earmark \$3,000 to the Hogout Program totaling it to \$13,000. It will need Court approval to be paid out when it comes on Agenda. County Auditor Larry Roberson read the list of adjustments that were discussed throughout the budget process, totaling \$61, 898.00. Motion made by Commissioner Muñoz, second by Commissioner Madrigal to approve adjustments. All Voting "Aye". Larry spoke about the Federal Inmate situation and explained that the budget deficit would be \$960,000.00 and explained 3 possible options to prepare for this loss. He has provided the Court a list of ways to do this. They could impact the proposed pay raises, lay off jail personnel and no increase of security for the new Justice Center. Chief Deputy David Brent spoke explaining that after the August 25th meeting that the Federal Marshal Service was looking to place the inmates elsewhere. A balanced budget needs to be in place by October 1st, but if not approved today, the entire process will need to be restarted. The Budget can be amended at any time during the year. Motion made by Commissioner Buchholtz, second by Commissioner Roland to approve the budget with the federal inmate revenue included. Roll Call Vote: Commissioner Muñoz-No, Commissioner Buchholtz-Yes, Commissioner Madrigal-Yes, Commissioner Roland-Yes, Judge Bonn -Yes. 4-1 Motion Passed.

WORKSHOP: begins

2014.09.04.11 Discussion to adopt Takings Impact Assessment of proposed amendments to Caldwell County Development Ordinance as required by Private Real Property Preservation Act.

2014.09.04.12 Discussion to approve procedural amendments to Caldwell County Development Ordinance, Sections 3.4(C), 3.6.4(B), 4.1(G), 4.3.2(H), 5.4, and 5.5.

2014.09.04.13 Discussion regarding a time to publish notice as required by Private Real Property Preservation Act for substantive amendment to Caldwell County Development Ordinance, Appendix Section G.1.

2014.09.04.14

Doug Young spoke to the Court about the proposed amendments that would be included on the Takings Impact Assessment.

Linda Hinkle asked about 3.4 (C) and 3.6.4 (B) where it was concerning (10) business days for notification. She asked if that is calendar days or business days? Doug Young explains that they specify business and the 45 days are calendar days.

Frank Sughrue asked about the details during a pre planning conference for the developer? Mack Harrison answered explaining the plat procedure.

COMMISSIONERS COURT MINUTES
Special Meeting on September 4, 2014

Linda Hinkle explains that there are not procedures in place or a list of requirements. She explains that there is no check off list. She explains that 10 days is not going to work for developers. It's a lack of information.

Susan Stewart said that the 10 day rule is not changing. She asked who's responsibility it was for a traffic study and was told that it would be the responsibility of the developer.

Hoppy Haden said that it should remain at 60 days in 3.6.4 (B).

Lou MacNaughton asked about the determination for a traffic study. Mr. Young replied that the County employee or the engineer would make that determination. She also spoke about the waterway measurements in Section G.1. She lives in a flood plain area and feels that the amended requirements are necessary.

Oscar Fogle discusses the varied descriptions of waterways and how to decide a setback. He is concerned with the proposed amendment. He spoke about the tax base and how much land could be affected. He is concerned with growth of our County.

Linda Hinkle says that FEMA sets the flood plain rules and the zones impacted. She asked about the proposed changes.

Judge Bonn wanted to know who was requesting the setback of the waterway measurement. Commissioner Roland explained that his concerns included the safety of the citizens.

Bobby Schmidt would like to see committee to look over proposed changes before anything is approved.

Judge Bonn and Commissioner Roland discuss the option of forming a committee to discuss changes. This will be discussed at the Monday, September 8, 2014 meeting.

Workshop ended: 6:39 p.m.

2014.09.04.14 Adjournalment

Motion made by Commissioner Muñoz, second by Commissioner Buchholtz to Adjourn. All Voting "Aye"

TOM D. BONN, County Judge

CALDWELL COUNTY
COMMISSIONERS COURT MINUTES
1403 Blackjack Street, Lockhart, Texas
Regular Meeting September 8, 2014 9:00 a.m.



TOM D. BONN County Judge
CAROL HOLCOMB County Clerk

ALFREDO MUÑOZ Commissioner Pct. 1
FRED F. BUCHHOLTZ Commissioner Pct. 2
NETO MADRIGAL Commissioner Pct. 3
JOE IVAN ROLAND Commissioner Pct. 4

Commissioner Buchholtz and Judge Bonn present at start of workshop.
Commissioner Madrigal and Commissioner Roland arrived at 8:35 a.m.

8:30 A.M. **WORKSHOP (No Action):** Report from program manager on remodeling of the new Caldwell County Judicial and Service Center. No action will be taken at this time. Project Manager Les Reddin reported the status of the Caldwell County Justice Center and showed the pictures of the progress that is continuing at this time. He explained that the County Auditor was reconciling the purchase of the furniture purchase. Members of the Court and the architect discussed the proposed purchase of ladders that could be used for the rolling files. The next workshop is scheduled for September 22, 2014.

Commissioner Muñoz arrived for meeting.
All Present

Call Meeting to order.

- 2014.09.08.01** **Invocation.** Lockhart Ministry Alliance.
Pastor James Greene with Lockhart Presbyterian Church opened the meeting in prayer.
- 2014.09.08.02** **Pledge of Allegiance to the Flags.** (Texas Pledge: Honor the Texas flag; I pledge allegiance to thee, Texas, one state under God, one and indivisible).
Judge Bonn led all present in the Pledge to both Flags.
- 2014.09.08.03** **Announcements:** Items or comments from Court Members or Staff.
Commissioner Buchholtz let the court know that he had attended the Legislative Conference in Austin approximately 10 days ago.
- Commissioner Madrigal recognized and thanked the Emergency Service Employees and the many County employees that volunteered their assistance on Labor Day weekend during the Float Fest on the river.
- 2014.09.08.04** **Citizens' Comments:** At this time any person may speak to Commissioners Court if they have filled out a Caldwell County Commissioners Court Participation Form. Comments will be limited to four (4) minutes per person. No action will be taken on these items and no discussion will be had between the speaker(s) and members of the Court. The Court does retain the right to correct factual inaccuracies made by the speakers. (If longer than 30 minutes, then the balance of comments will continue as the last agenda item of the day).
- 1. Susan Stewart** urged the Court to pass the agenda item concerning the citizens committee to discuss the ordinance. She also urged them to pass the variance amendments being discussed today. She said that she agreed with the judge that while not all variances should be given, reasons for variances should be considered.
- 2. Byron Freidrich** spoke in support of Commissioner Roland after the "vicious and threatening" attack of Brent Ryan attorney for Green Group Holdings at the August 25, 2014 Commissioner Court meeting. He spoke about the allegations about leakage being at a landfill in Alabama. There is connection with Green Group Holdings and this landfill. He said that Commissioner Roland is looking out for the best interest of his County.

COMMISSIONERS COURT MINUTES
Regular Meeting on September 8, 2014

3. Kathleen Clough spoke to the Court and asked them to help Commissioner Roland to fight for the County. She asked the Court if they would allow her to dump garbage on their yard for 1 (one) dollar. She said that is what the landfill is proposing.

4. Leslie Holder said that she was shocked when she watched the August 25th meeting. She expressed that not only did Brent Ryan threaten Commissioner Roland, but also herself as a Caldwell County resident. She urged the Court to support Commissioner Roland and the County to protect the citizen's health.

(exceeding the time limit, she was asked to continue as the last agenda item of the day).

5. Frank Sughrue thanked the Court and especially Commissioner Roland for their time. He spoke about the events that had transpired at the CAPCOG meeting that was referred to at the August 25th meeting, saying that there were many mistakes in the information given by Brent Ryan including the name of the proposed landfill and that he was corrected by the CAPCOG panel.

6. Oscar Fogle said that about 80% of the water for Luling and Lockhart come from the San Marcos River purified by the Guadalupe Blanco River Authority Treatment Plant. He expressed his concerns for the need of a tax base in Caldwell County. He is concerned that the ordinance changes could hurt growth in the County.

7. Nick Dornak with Plum Creek Watershed spoke about the Texas Lutheran University Center for Leadership sponsors a "Hot Dog Day" of leadership and 20 students came to Luling this past Saturday to help clean up some of the sites on the watershed banks. More events to follow in the Community and Keep Lockhart Beautiful will take place on October 11. He thanked the County for support and Mike Bittner for his help with some safety equipment.

8. Jodie Friedrich spoke to the Court about the proposed landfill and gave an overview of the problem that has occurred at the landfill in Tuscaloosa, Alabama. She gave the Court a handout that spoke of partnership with Green Group Holdings. There is a lawsuit concerning the leakage of arsenic and lead and the change of permits. There was a host agreement signed in the area. She asks for protection for those who will be most affected by the landfill and the future growth of our County.

9. Alicia Thornton was concerned with development on flood plain and the chance of extreme flooding. The expense of cleanup from a flood would be devastating to our County. She said that Commissioner Roland is doing what he was elected to do.

2014.09.08.05 Consent Agenda. (Any member of the Court may request that an item within the Consent Agenda to be moved to the Regular Agenda for further discussion and action).

A. Pay Bills in the amount of \$1,069,628.48 for September 8th, 2014.

B. To consider approval of Commissioners Court Minutes for August 25th, 2014.
Motion made by Commissioner Muñoz, second by Commissioner Roland to approve Consent Agenda items A & B. All Voting "Aye"

2014.09.08.06 Reports.
Elections Department Report – Pamela Ohlendorf
Pamela Ohlendorf gave the Elections Department Report for August 2014.

Septic and Subdivision Report – Kasi Miles
Kasi Miles gave the Septic and Subdivision report for August 2014.

Treasurer's Report – Lori Rangel
Lori Rangel gave the Treasurers report for July 2014.

2014.09.08.07 Special Presentations. None.

(ALL OTHER AGENDA ITEMS)

COMMISSIONERS COURT MINUTES
Regular Meeting on September 8, 2014

Judge Bonn moved these items forward.

2014.09.08.17 **Discussion/Action** to adopt the tax rate of \$0.6906 per \$100 of assessed valuation for the fiscal year 2014-2015.

NOTE: Pursuant to section 81.006 of the Local Government Code, at least four members of the Commissioners Court must be present to vote and at least three members must vote to consider approval of the tax rate. The vote to adopt the tax rate must be a roll call vote.

Required statutory motion: I move to adopt the order setting forth that the property tax rate be increased by the adoption of a tax rate of \$0.6906 per \$100 of valuation, which is effectively a 4.351768% increase in the tax rate.

Motion made by Commissioner Roland, second by Commissioner Muñoz to adopt the order setting forth that the property tax rate be increased by the adoption of a tax rate of \$0.6906 per \$100 of valuation, which is effectively a 4.351768% increase in the tax rate. Roll Call Vote: Commissioner Muñoz-Yes, Commissioner Buchholtz-Yes, Commissioner Madrigal-Yes, Commissioner Roland, Yes, Judge Bonn-Yes. Motion Passed

2014.09.08.18 **Discussion/Action** concerning ratification of the tax rate as it is reflected in the budget. **Cost:** None; **Speaker:** Judge Bonn/Larry Roberson; **Backup:** None.

Required statutory motion: I move to ratify the property tax increase of \$0.6906 per \$100 of assessed valuation that is reflected in the Caldwell County budget adopted on September 4, 2014.

Motion made by Commissioner Roland, second by Commissioner Madrigal to ratify the property tax increase of \$0.6906 per \$100 of assessed valuation that is reflected in the Caldwell County budget adopted on September 4, 2014. Roll Call Vote: Commissioner Muñoz-Yes, Commissioner Buchholtz-Yes, Commissioner Madrigal-Yes, Commissioner Roland, Yes, Judge Bonn-Yes. Motion Passed

2014.09.08.19 **Discussion/Action** to consider the selection of a committee by commissioner's court to discuss the Takings Impact Assessment and proposed amendments to Caldwell County Development Ordinance.

Motion made by Commissioner Roland, second by Commissioner Madrigal to form a citizens committee to discuss the Caldwell County Development Ordinance and will take names from the other Commissioners to form the Committee in addition that Judge Bonn will appoint members of advisory panel. All Voting "Aye"

2014.09.08.20 **Discussion/Action** to adopt Takings Impact Assessment of proposed amendments to Caldwell County Development Ordinance as required by Private Real Property Preservation Act.

Motion made by Commissioner Roland, second by Commissioner Buchholtz to adopt Takings Impact Assessment of proposed amendments to Caldwell County Development Ordinance as required by Private Real Property Preservation Act. All Voting "Aye"

2014.09.08.21 **Discussion/Action** to consider approval of procedural amendments to Caldwell County Development Ordinance, Sections 3.4(C), 3.6.4(B), 4.1(G), 4.3.2(H), 5.4, and 5.5. The Commissioner's Court is considering only the amendments addressed in the Takings Impact Assessment.

Motion made by Commissioner Roland, second by Judge Bonn to table this item. All Voting "Aye"

COMMISSIONERS COURT MINUTES
Regular Meeting on September 8, 2014

- 2014.09.08.22** **Discussion/Action** to consider approval of publishing notice as required by Private Real Property Preservation Act for substantive amendment to Caldwell County Development Ordinance, Appendix Section G.1 as discussed in the Takings Impact Assessment. Motion made by Commissioner Roland, second by Commissioner Madrigal to approve of publishing notice as required by Private Real Property Preservation Act for substantive amendment to Caldwell County Development Ordinance, Appendix Section G.1 as discussed in the Takings Impact Assessment. Commissioner Muñoz, Commissioner Madrigal, Commissioner Roland and Judge Bonn Voting "Aye" Commissioner Buchholtz voting "No". Motion Passed
- 2014.09.08.23** **Discussion** regarding update on the status of appraisal report from Menn & Associates for the tax office at 100 E. Market Street and the judicial center at 201 E. San Antonio Street as approved at commissioners court on July 28, 2014. Judge Bonn reports that there is no update at this time other than we are close to having both appraisals for the current Judicial Center and the Tax office. Hopes are to have them both by the next meeting. One of them is complete at this time.
- 2014.09.08.08** **Discussion/Action** regarding Burn Ban for Caldwell County. Martin Ritchey spoke on weather conditions and even though there was a little rain, he recommended to keep the burn ban on. Motion made by Commissioner Roland, second by Commissioner Madrigal to keep the burn ban on. All Voting "Aye"
- 2014.09.08.09** **Discussion/Action** to consider approval of Resolution #13-2014 advocating hyperbaric therapy, other medical treatments and therapy for traumatic brain injuries (TBI) and post-traumatic stress disorder (PTSD). Motion made by Judge Bonn, second by Commissioner Muñoz to approve Resolution #13-2014 advocating hyperbaric therapy, other medical treatments and therapy for traumatic brain injuries (TBI) and post-traumatic stress disorder (PTSD). All Voting "Aye"
- 2014.09.08.10** **Discussion/Action** to consider approval of Invoice #210 for August 2014 timesheet for Les Reddin, LongLife Projects in the amount of \$7,200 for the Justice Service Center project management work. Motion made by Commissioner Muñoz, second by Commissioner Buchholtz to approve Invoice #210 for August 2014 timesheet for Les Reddin, LongLife Projects in the amount of \$7,200 for the Justice Service Center project management work. All Voting "Aye"
- 2014.09.08.11** **Discussion/Action** to consider approval of Application and Certificate for Payment #8 for Braun and Butler Construction in the amount of \$683,951.55 for the Caldwell County Justice Center. Motion made by Commissioner Muñoz, second by Commissioner Buchholtz to approve Application and Certificate for Payment #8 for Braun and Butler Construction in the amount of \$683,951.55 for the Caldwell County Justice Center. All Voting "Aye"
- 2014.09.08.12** **Discussion/Action** to consider approval of invoice #50009964 for the rolling office furniture files for new Caldwell County Justice Center in the amount of \$151,512.13. Motion made by Judge Bonn, second by Commissioner Muñoz to approve of invoice #50009964 for the rolling office furniture files for new Caldwell County Justice Center in the amount of \$151,512.13. All Voting "Aye"
- 2014.09.08.13** **Discussion/Action** to consider approval of Invoice #7 from Aulick & Associates in the amount of \$5,000 (40 hours at \$125/hour) for consultant services for the period of August 1st – 31st, 2014, regarding transportation projects for Caldwell County. Motion made by Commissioner Muñoz, second by Commissioner Madrigal to approve Invoice #7 from Aulick & Associates in the amount of \$5,000 (40 hours at \$125/hour) for consultant services for the period of August 1st – 31st, 2014, regarding transportation projects for Caldwell County. All Voting "Aye"

COMMISSIONERS COURT MINUTES
Regular Meeting on September 8, 2014

- 2014.09.08.14** **Discussion/Action** to consider approval of Service Agreement with Motorola Solutions contract Number S00001017254 start date 10/01/2014 ending 09/30/2015 for maintenance and software for the Radio Network System. **Cost:** \$23,015.69 quarterly
This is a joint contract with the City of Lockhart and the County for the network. Motion made by Commissioner Muñoz, second by Commissioner Buchholtz to approve Service Agreement with Motorola Solutions contract Number S00001017254 start date 10/01/2014 ending 09/30/2015 for maintenance and software for the Radio Network System at a rate of \$23,015.69 quarterly. All Voting "Aye"
- 2014.09.08.15** **Discussion/Action** to consider approval of the proposed City of Lockhart Animal Shelter budget for fiscal year 2014-2015 in the amount of \$116,621.
Motion made by Commissioner Madrigal, second by Commissioner Muñoz to approve the proposed City of Lockhart Animal Shelter budget for fiscal year 2014-2015 in the amount of \$116,621. All Voting "Aye"
- 2014.09.08.16** **Discussion/Action** to consider approval of reimbursing Deborah Kortan \$620.50 for food and drinks during the San Marcos River Fest held on August 31st, 2014 for emergency personnel. Motion made by Commissioner Muñoz, second by Commissioner Madrigal to approve reimbursement of \$620.50 to Deborah Kortan for food and drinks during the San Marcos River Fest held on August 31st, 2014 for emergency personnel. Friendly amendment from Judge Bonn was accepted to use the funds from her budget under health and welfare. All Voting "Aye"
- 2014.09.08.24** **Adjournment**
Motion made by Commissioner Muñoz, second by Commissioner Buchholtz to Adjourn. All Voting "Aye"

TOM D. BONN, County Judge

B.

Floors + Plus

P.O. Box 128
Lockhart, Texas 78644-0128
Phone: 512-398-7179
Fax: 512-398-7170

David Raschke

8-8-14

Larry Bagwell

Juvenile Probation
202 E. San Antonio
Lockhart TX 78644
ATTN: JAY

FAX
398-5427

Move furniture (no competitors) Demo Carpet
and vinyl base - sup floor - Install
Kraus Mentor "Chocolate" with cushion
back 18 Enhanced backing and new base
to include hallway (color to be
Selected) and trim in the following
rooms. Chief, assistant Chief, ISP, LKT,
Secretary, break room meeting room
hall and three other offices. Price
includes material and labor, TX Permit

\$8,767.00

Thank You
D.O. Raschke
J.L. Bon

CALDWELL COUNTY
AUG 11 2014
JUVENILE PROBATION

C.

Caldwell County, Texas

Engineering Consultant Selection Process

(Revised Draft September 9, 2014)

The following process is utilized by Caldwell County (the "County") for selection of engineering, professional, and scientific consultants to complete project development services for various projects located within the County and where costs are reimbursed by the State. **The County will comply with the requirements of Texas Government Code, Chapter 2254 in the procurement of professional and consulting services.**

The County, or their representative, will develop a Request for Qualifications (RFQ) or Request for Proposal (RFP) and a draft scope of services for the contract(s) to be procured. The RFQ/RFP will contain requirements for a written letter of interest and an interview. The selection of a consultant shall be based on the combined scores of the written letter of interest and the interview. The RFQ/RFP shall outline the evaluation criteria to be utilized in review of the written letter of interest and the interview, shall specify the percent weighting factor for each criteria, and shall specify the effective weight of the letter of interest scores and the interview scores. Evaluation criteria shall focus on the firm's qualifications to complete the work. Typical evaluation factors include approach to the project, comparable experience and availability of the project manager, experience and availability of key personnel, past performance and quality management approach. The consultant evaluation and selection committee for the County is anticipated to include the County Judge, one or more County Commissioners, the County Engineer, and others as designated by the County Commissioners or County Engineer. The weighting factors for the written letter of interest and interview scores as well as the evaluation criteria and their respective weighting factors shall be determined by the selection committee prior to issuance of the RFQ/RFP.

In summary and in keeping with the TxDOT Local Government Project Procedures (LGPP) manual the following basic steps will be followed by the County Commissioners Court:

- 1) Establish a consultant evaluation and selection committee
- 2) Issue a Request for Qualifications (RFQ) or Request for Proposals (RFP)
- 3) Receive and evaluate the proposals;
- 4) Choose the most qualified consultant; and
- 5) Negotiate a fee.

If a satisfactory contract cannot be negotiated, negotiations should be formally terminated with the most qualified consultant and negotiations can begin with the second most qualified consultant.

D.

To: Caldwell County Commissioners Court
From: Michael Aulick, Aulick and Associates, LLC
Re: Discussion/Action to authorize the County Judge to issue a Notice of Intent (NOI) to contract for consultant engineering services for design of the four county road projects approved by TxDOT for upgrading with SH 130 Concession Funds and to establish a consultant evaluation and selection committee.

Date: September 9, 2014

Judge Bonn and Commissioners,

Attached is a draft Notice of Intent (NOI) recommended for approval by the Commissioners Court. This NOI is consistent with the revised Caldwell County Engineering Consultant Selection Process. I have submitted this NOI draft to Roy Dill, TxDOT Area Engineer, for review and comment prior to issuance by Judge Bonn.

Items to be completed prior to issuance include:

1. Solicitation Number (pages 1 and 4)
2. 60% PS&E by date (page 1)
3. Completed PS&E by date (page 2)
4. Appropriate major work categories (page 3), Roy Dill will address
5. Interviews during week of _____ (page 4)
6. Deadline date and time and sole contact (pages 6 and 7) (Must allow at least 14 calendar days from posting)
7. Consultant Selection Committee members to be selected by Commissioners Court (page 7). I've asked Roy Dill if he would serve on the Committee, since we need an engineer on the Committee.

Please let me know if you have any questions.

Original Posting Date: _____

(WORKING DRAFT 9-9-14)**NOTICE OF INTENT TO CONTRACT
FOR SPECIFIC DELIVERABLE CONTRACTS
WITH STATE FUNDING**

Caldwell County, Texas intends to enter into specific deliverable contract(s) with prime providers pursuant to Texas Government Code, Chapter 2254.028, Subchapter A, and 43 Texas Administrative Code (TAC) §§9.30-9.43, to provide the following services.

Solicitation Number: 2014-P_____

Project Description and Work to be Performed:

The selected prime provider(s) shall provide all preliminary engineering activities for the SH 130 Concession Funded Caldwell County Projects which shall include: the environmental clearance coordination and document; design and construction survey; utility adjustment coordination; right of way (ROW) acquisition coordination; and construction phase design services.

The selected prime provider(s) shall prepare the engineering plans, specification, and estimates (PS&E) necessary for the development of the following projects:

Project # 1

The **Old Fentress Rd. / CR 217** project from SH 130 to FM 20 shall consist of the upgrade and repaving of the 2-lane county roadway.

Project # 2

The **Westwood Rd./ CR 215** project from FM 20 to 2.1 miles southeast of FM 20 shall consist of the paving of the unpaved portion of the 2-lane county roadway.

Project # 3

The **Schuelke Rd / CR 222** project from SH 21 to SH 130 shall consist of the upgrade and repaving of the 2-lane county roadway.

Project # 4

The **Cherryville Parkway** project from SH 80 to 0.8 mile north of SH 80 shall consist of the paving of the unpaved portion of the 2-lane county roadway.

For all four projects the prime provider(s) shall submit **60% PS&E** to Caldwell County and the TxDOT Austin District Design Office for review no later than _____.

The selected Provider(s) shall agree on the definition of 60% completion upon submission of the Project Development Schedule for the design activities. Furthermore, the prime provider(s) shall submit **completed PS&E** to Caldwell County no later than _____.

For all four projects the prime provider(s) will be responsible for the coordination of the adjustments, removal, or relocations of utility facilities in accordance with applicable State laws, regulation, rules, policies, and procedures. The prime provider shall provide Caldwell County with written documentation from appropriate regulatory agency(ies) that identified environmental clearances have been obtained prior to advertisement for bids.

Selection Requirements:

The proposed team must demonstrate that a professional engineer and professional land surveyor registered or licensed in Texas will sign and seal the work to be performed on the contract.

For purposes of executing an engineering contract and doing work with Caldwell County, the prime provider must be registered with the Texas Board of Professional Engineers. If a joint venture is being considered, see the "Joint Venture Certification Requirements" section of this Notice for additional requirements.

The proposed **project manager** must be registered in the State of Texas by the Letter of Interest (LOI) due date shown in this Notice.

The selected prime provider(s) must perform a minimum of 30% of the actual contract work.

Certification Requirements:

TxDOT Precertification requirements are not waived:

TxDOT precertification requirements are not waived for the contract.

The prime provider's and subproviders' employees, who are proposed as task leaders, must be precertified by the deadline date and time for receiving the LOI for each of the advertised work categories listed in which those employees are intended to perform work.

Annual Renewal Requirement:

Annual renewal is governed by Section 9.41 of Title 43 in the Texas Administrative Code (TAC). The following is a summary of that requirement.

All precertified firms must complete the annual renewal process between January 1 and March 31 each year to maintain Active status for the firm. Active status is required for precertified prime providers and subproviders proposed for precertified work categories in the LOI. Active status for applicable firms must be obtained by the LOI due date shown in this Notice.

Additional information on annual renewal for precertified firms is available on TxDOT's

internet web site at:

http://www.txdot.gov/business/contractors_consultants/renewal_precertified.htm.

A list of Active precertified firms is available at:

<http://www.dot.state.tx.us/des/precert/precert1.htm>.

Disqualification of the LOI:

Caldwell County will disqualify any LOI that is not received prior to the deadline date and time shown in this Notice.

Joint Venture Certification Requirements:

Caldwell County allows joint ventures. Submittal of a joint venture proposal is at the discretion of the provider. A joint venture is considered the prime. In order for a joint venture to be precertified, each firm included in the joint venture must be precertified unless precertification has been waived or a firm is performing only work identified by non-listed work categories. All joint venture parties must be clearly identified.

For purposes of executing an engineering contract and doing work with Caldwell County, each firm included in the joint venture must be registered with the Texas Board of Professional Engineers.

All joint venture parties will be required to sign the contract and take equal 100% responsibility for the contract.

Major Work Categories:

The LOI must address the team's capabilities and experience in the following major work categories:

Roadway Design – 4.1.1, 4.2.1, ~~4.3.1~~

Bridge Design – 5.1.1, ~~5.2.1, 5.3.1~~

Design and Construction Survey - 15.2.1

Environmental Documentation preparation – 2.14.1

Signaling/Paving Markings – 8.1.1

Hydraulic Design & Analysis – 10.2.1

Selection Criteria:

Caldwell County will evaluate Letters of Interest using the following criteria, totaling **100%**

- Project understanding and approach (30%)
- The project manager's experience with similar projects (20%)
- Similar project-related experience of the task leaders responsible for the major work categories identified in this Notice (15%)
- Ability to meet project deadlines (20%)

- The prime provider's Quality Assurance/Quality Control (QA/QC) program (10%)
- The prime provider's QA/QC specifically for environmental services and documentation (5%)

Selection Procedure:

Providers selected for the short list are established using the team's Letter of Interest score. The short list of providers will be interviewed and the maximum points for the interview will be **25%**. Up to two prime providers will be selected based on a combination of the letter of interest score and the interview score, i.e. a maximum score of **125%**.

A Short List meeting with providers advancing to the short list will not be held.

Providers advancing to the short list will participate in an interview but will not be required to submit a written proposal. These providers will be sent an Interview and Contract Guide (ICG) containing instructions for the interview. The prime provider's project manager must be present for and participate in the interview or the provider will be dropped from further consideration.

The task leaders of the major work categories identified in the LOI must attend the interview with the project manager. The project manager may invite an alternate, identified in the LOI organization chart under the same work category, to participate in the interview if a task leader is unable to attend because of an exclusion due to their participation in another interview.

To participate in the interview with the prime provider's project manager, the participant must be identified in the LOI organization chart.

Interviews will be evaluated, and the interview score will be the basis for the contract award. Interviews will be scheduled during the **week _____, 2014**.

The projects identified in this Notice will be assigned to the selected provider(s) based on the final ranking of providers by capabilities for each project at the completion of the evaluation process including the LOI and interview.

Letter of Interest Requirements:

The Letter of Interest (LOI) is limited to ten (10) 8½ x 11 inch pages, single sided, using 12 pitch font size.

The LOI must be submitted with a single staple in the upper left-hand corner. No other binding will be accepted.

The LOI must include the following:

- **Solicitation Number 2014 – P ____**
- A. The name of the prime provider's project manager (who may be replaced during the selection and before contract execution only by another person proposed in the LOI from the prime provider, as approved by Caldwell County)

and the names of the prime provider's and any subproviders' task leaders (who may be replaced during the selection and before contract execution only by another precertified person proposed in the LOI from the team, as approved by the Consultant Selection Committee) who will work on the contract. Under a joint venture agreement, one project manager must be identified to represent the joint venture.

- B. Information showing the team's project understanding and approach; the project manager's experience with similar projects; similar project-related experience of the task leaders responsible for the major work categories; any additional selection criteria; and other pertinent information addressed in this Notice. For each similar project referenced, identify either the project manager's or the task leader's specific role(s) and work contributed.
- C. An organization chart limited to one (1) 8 ½ x 11 page containing the names of the prime provider and any sub providers' task leaders proposed for the team and their contract responsibilities by work category. Task leaders should be clearly designated. Other personnel can be identified at the prime provider's discretion. The organization chart should also include the name, address, e-mail, telephone and fax numbers of the prime provider and all sub providers proposed for the team. The organization chart can be prepared with a font size of less than 12 pitch but no smaller than 8 pitch. The organization chart is not included in the ten page Letter of Interest (LOI), it is considered an Attachment.

Remember: To participate in the interview with the prime provider's project manager, the participant must be identified in the LOI, such as on the Organization Chart The client reference attachment (see below) is limited to one page and must contain at least three client references for the prime provider's project manager. For TxDOT references include the name and region, district, or division. For non-TxDOT references include the name and address.

The client reference must be an individual who is, or was, actively involved in a contract for which the proposed project manager is, or was, responsible. The client reference, whether TxDOT or non-TxDOT, must have, or have had, a contract management role, such as project manager or work authorization manager, responsible for managing the proposed project manager's work.

The proposed project manager may use client references attained through project management experience obtained through a previous employer.

Also, if the proposed project manager was a sub-provider's project manager on a previous project, the prime provider's project manager for that project may be used as a client reference.

Also, it is understood that some proposed project managers may not have three client references. In this case, verify in the form of a statement that the proposed project manager does not have three client references as a result of limited

assignments as a project manager.

Client references will be evaluated only if your firm is short-listed.

- Submit one original and seven copies of Letter(s) of Interest (LOI) with attachments. Each LOI must contain a complete set of attachments,

Required Letter of Interest Attachments:

The following documents/attachments are considered in addition to the maximum 10 pages allowed for the LOI. Please limit the number of attachment pages to a reasonable number.

- Cover letter
- A completed and signed Caldwell County Code of Ethics (?)
- The client reference page, personnel resumes, and description of previous projects.
- Verification in the form of a statement that the proposed team individuals are currently employed by either the prime provider or a sub provider.
- Verification in the form of a statement that the prime provider (firm or the joint venture members) is registered with the Texas Board of Professional Engineers. If not applicable to your firm, please provide an explanation

Deadline Date and Time:

A Letter of Interest notifying Caldwell County of the provider's interest in the contract(s) will be accepted by hand delivery to _____. A Letter of Interest notifying Caldwell County of the provider's interest in the contract(s) **will not** be accepted by fax or electronic mail.

The provider is responsible for verifying that the Caldwell County contact person has received the LOI.

Letters of Interest must be received prior to 2:00 p.m. CT, on _____, 2014. Any LOIs received after the deadline date and time shown above will not be considered

Contract execution expected by _____ 2014. Contract duration is expected through _____ 2014.

Proposed Payment Type:

The proposed contract payment type is **hourly not-to exceed.**

Work Authorizations under these contracts will be issued in conformance with Caldwell County current procedures.

Sole Caldwell County Agency Contact:

Questions regarding this Notice of intent must be submitted in writing (via email)

to _____ to be considered.

The deadline for submitting questions regarding this Notice of intent is **2:00 PM** on _____, **2014**. Significant and relevant questions and the official responses will be provided to prospective consultants by _____ **2014**.

The Consultant Selection Committee members are: Judge Tom Bonn, Area Engineer, Roy Dill, TxDOT, P.E., City Manager, Vance Rodgers, Lockhart, and retired County Engineer, Bill Gardner. No contact with the Consultant Selection Committee members relative to this project NOI is permitted prior to the interviews. Any unauthorized contact is grounds for rejection of the LOI.

2014.09.15.06 Reports.

Federal Inmate Report – Larry Roberson

General Fund Operating Statement – Larry
Roberson

Sales Tax Report – Larry Roberson

Tax Collection Report – Larry Roberson

Unit Road Systems Report – Dwight Jeffrey

San Marcos River Fest – Labor Day weekend –
Martin Ritchey

CALDWELL COUNTY, TEXAS

FEDERAL INMATE REVENUE

FISCAL YEAR 2013-2014

<u>MONTH</u>	<u>ACTUAL</u>	<u>BUDGETED</u>	<u>MONTH OVER/UNDER</u>	<u>FISCAL YTD OVER/UNDER</u>
OCTOBER 2013	\$ 85,455	\$ 81,650	\$ 3,805	\$ 3,805
NOVEMBER	80,920	81,650	(730)	3,075
DECEMBER	<u>81,557</u>	<u>81,650</u>	<u>(93)</u>	<u>2,982</u>
SUB-TOTAL	<u>\$ 247,932</u>	<u>\$ 244,950</u>	<u>\$ 2,982</u>	<u>\$ 2,982</u>
JANUARY 2014	\$ 76,522	\$ 81,650	\$ (5,128)	\$ (2,146)
FEBRUARY	66,383	81,650	(15,267)	(17,413)
MARCH	<u>58,216</u>	<u>81,650</u>	<u>(23,434)</u>	<u>(40,847)</u>
SUB-TOTAL	<u>\$ 201,121</u>	<u>\$ 244,950</u>	<u>\$ (43,829)</u>	<u>\$ (40,847)</u>
APRIL	\$ 42,191	\$ 81,650	\$ (39,459)	\$ (80,306)
MAY	49,422	81,650	(32,228)	(112,534)
JUNE	<u>69,930</u>	<u>81,700</u>	<u>(11,770)</u>	<u>(124,304)</u>
SUB-TOTAL	<u>\$ 161,543</u>	<u>\$ 245,000</u>	<u>\$ (83,457)</u>	<u>(124,304)</u>
JULY	\$ 78,215	\$ 81,700	(3,485)	\$ (127,789)
AUGUST	72,970	81,700	(8,730)	\$ (136,519)
SEPTEMBER	<u> </u>	<u>81,700</u>	<u> </u>	<u> </u>
SUB-TOTAL	<u>151,185</u>	<u>245,100</u>	<u>(12,215)</u>	<u>-</u>
FISCAL YEAR TOTAL	\$ 761,781	\$ 980,000		-

CALDWELL COUNTY, TEXAS
GENERAL FUND OPERATIONS STATEMENT
TEN MONTHS ENDED JULY 31, 2014

FUND BALANCE - OCTOBER 1, 2013

\$ 6,353,359

	BUDGET	ACTUAL	VARIANCE	YTD PERCENT
REVENUES:				
TAXES	\$ 11,442,477	\$ 11,267,346	\$ (175,131)	98.47%
LICENSES & PERMITS	472,500	460,406	(12,094)	97.44%
INTERGOVERNMENTAL REVENUE	2,692,111	2,223,569	(468,542)	82.60%
FEES OF OFFICE	1,023,900	787,728	(236,172)	76.93%
FINES & FORFEITURES	870,500	740,964	(129,536)	85.12%
OTHER REVENUES	136,500	236,104	99,604	172.97%
TRANSFERS FROM OTHER FUNDS	4,300	-	(4,300)	0.00%
TOTAL REVENUES	<u>\$ 16,642,288</u>	<u>\$ 15,716,117</u>	<u>\$ (926,171)</u>	<u>94.43%</u>
EXPENDITURES:				
PUBLIC FINANCE	\$ 1,439,269	\$ 1,197,920	\$ 241,349	83.23%
JUDICIAL	2,548,774	2,096,144	452,630	82.24%
LAW ENFORCEMENT - JAIL	5,984,511	5,001,119	983,392	83.57%
GENERAL ADMINISTRATION	3,379,850	2,657,545	722,305	78.63%
PUBLIC HEALTH AND WELFARE	578,000	361,609	216,391	62.56%
AGRICULTURE	100,269	80,708	19,561	80.49%
TRANSFERS TO OTHER FUNDS	4,501,257	4,135,992	365,265	91.89%
TOTAL EXPENDITURES	<u>\$ 18,531,930</u>	<u>\$ 15,531,037</u>	<u>\$ 3,000,893</u>	<u>83.81%</u>
FUND BALANCE - JULY 31, 2014		<u>\$ 6,538,439</u>		
NET INCREASE IN FUND BALANCE		<u>\$ 185,080</u>		

CALDWELL COUNTY, TEXAS

MONTHLY SALES TAX COLLECTIONS

FISCAL YEAR 2013-2014

<u>MONTH</u>	<u>ACTUAL</u>	<u>BUDGETED</u>	<u>MONTH OVER/UNDER</u>	<u>FISCAL YTD OVER/UNDER</u>
OCTOBER 2012	\$ 118,708	\$ 122,700	\$ (3,992)	\$ (3,992)
NOVEMBER	127,842	110,400	17,442	13,450
DECEMBER	106,451	116,500	(10,049)	3,401
SUB-TOTAL	<u>\$ 353,001</u>	<u>\$ 349,600</u>	<u>\$ 3,401</u>	<u>\$ 3,401</u>
JANUARY 2014	\$ 112,105	\$ 113,700	\$ (1,595)	\$ 1,806
FEBRUARY	162,976	137,700	25,276	27,082
MARCH	111,420	100,000	11,420	38,502
SUB-TOTAL	<u>\$ 386,501</u>	<u>\$ 351,400</u>	<u>\$ 35,101</u>	<u>\$ 38,502</u>
APRIL	\$ 109,885	\$ 103,300	\$ 6,585	\$ 45,087
MAY	175,273	134,100	41,173	86,260
JUNE	130,914	118,500	12,414	98,674
SUB-TOTAL	<u>\$ 416,072</u>	<u>\$ 355,900</u>	<u>\$ 60,172</u>	<u>98,674</u>
JULY	\$ 111,060	\$ 109,700	1,360	100,034
AUGUST	172,984	128,700	44,284	144,318
SEPTEMBER		114,700		
SUB-TOTAL	<u>\$ 284,044</u>	<u>\$ 353,100</u>	<u>45,644</u>	<u>-</u>
FISCAL YEAR TOTAL	<u><u>\$ 1,439,618</u></u>	<u><u>\$ 1,410,000</u></u>		<u><u>\$ -</u></u>

CALDWELL COUNTY COMMISSIONERS

Tax Collection Report

AUGUST 2014

	August	Year to Date	TOTAL	PRIOR YEAR
2013 Tax Collection	\$58,039.36	\$12,016,418.73	\$12,074,458.09	\$11,388,827.12
2012 & Prior Collection	\$64,759.03	\$607,412.25	\$672,171.28	\$572,673.89
Total Tax Collection =	\$122,798.39	\$12,623,830.98	\$12,746,629.37	\$11,961,501.01

note: Above figures include penalties and interest collected

2013 Original Levy \$12,503,136.12

August 31, 2014 Percent of 2013 Tax Collected 95.89%

August 31, 2013 Percent of 2012 Tax Collected 95.50%

August 31, 2012 Percent of 2011 Tax Collected 95.27%

August 31, 2014 - Balance of Delinquent Tax \$1,190,842.55

August 31, 2013 - Balance of Delinquent Tax \$1,182,177.35

August 31, 2012 - Balance of Delinquent Tax \$1,206,048.66

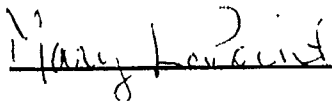
Corrections made to Current Tax Roll (\$22,684.28)

Corrections made to Delinquent Tax Roll (\$7,566.50)

NOTE:

Caldwell County Appraisal District has collected and disbursed Attorney Fees in the amount of \$16,871.33

Submitted by:

 _____

Mary LaPoint
 Chief Appraiser
 Caldwell County Appraisal District

CALDWELL COUNTY

Balance Sheet

AUGUST 2014

DEPOSITS

Date	Amount		CHECK #
	M & O	I & S	
(1) 7-Aug-14	\$36,979.27	\$4,258.37	EFT
(2) 14-Aug-14	\$9,582.50	\$1,139.11	EFT
(3) 20-Aug-14	\$7,974.62	\$931.48	EFT
(4) 28-Aug-14	\$30,328.72	\$3,593.20	EFT
(5) 4-Sep-14	\$25,099.85	\$2,911.27	EFT
(6)	\$0.00	\$0.00	
(7)	\$0.00	\$0.00	
(8)	\$0.00	\$0.00	
(9)	\$0.00	\$0.00	
(10)	\$0.00	\$0.00	
(11)	\$0.00	\$0.00	
(12)	\$0.00	\$0.00	
(13)	\$0.00	\$0.00	
(14)	\$0.00	\$0.00	
(15)	\$0.00	\$0.00	
(16)	\$0.00	\$0.00	
(17)	\$0.00	\$0.00	
(18)	\$0.00	\$0.00	
(19)	\$0.00	\$0.00	
(20)	\$0.00	\$0.00	
(21)	\$0.00	\$0.00	
(22)	\$0.00	\$0.00	
(23)	\$0.00	\$0.00	
(24)	\$0.00	\$0.00	
(25)	\$0.00	\$0.00	
Subtotals	<u>\$109,964.96</u>	<u>\$12,833.43</u>	
TOTAL ALL DEPOSITS	<u>\$122,798.39</u>		

CALDWELL COUNTY

Balance Sheet

AUGUST 2014

Collections

	FARM TO MARKET M & O		GENERAL FUND	
			M & O	I & S
Current Tax	\$7.03		\$43,806.67	\$5,243.23
Current P & I	\$0.93		\$8,021.77	\$959.73
Delinquent Tax	\$8.87		\$40,961.99	\$4,674.21
Delinquent P & I	\$4.20		\$17,153.50	\$1,956.26
		Subtotals	\$109,943.93	\$12,833.43
TOTAL FTM	\$21.03	TOTAL GCA	\$122,777.36	
	ROAD & BRIDGE M & O		STATE TAX M & O	
Current Tax	n/a		n/a	
Current P & I	n/a		n/a	
Delinquent Tax	\$0.00		\$0.00	
Delinquent P & I	\$0.00		\$0.00	
TOTAL RAB	\$0.00	TOTAL STX	\$0.00	
TOTAL COUNTY COLLECTIONS			\$122,798.39	

NOTE:

Caldwell County Appraisal District has collected and disbursed Attorney Fees in the amount of \$16,871.33

Attorney Fees Detail

FTM	\$2.27
GCA	\$16,869.06
RAB	\$0.00
STX	\$0.00

2014 Budget Summary
Year-to-Date Report: 10/1/2013 - 9/9/2014

All Assignments

Caldwell County

Account Code	Account Name	Budgeted Amount	Recorded Invoices	Estimated Residual
502-1101-214	Uniforms	\$22,000.00	\$25,558.22	(\$3,558.22)
502-1101-311	Culvert Pipes	\$15,000.00	\$8,496.50	\$6,503.50
502-1101-312	Operating Supplies	\$35,000.00	\$26,621.82	\$8,378.18
502-1101-314	Flex Base	\$150,000.00	\$146,082.39	\$3,917.61
502-1101-315	Gravel	\$215,000.00	\$212,922.62	\$2,077.38
502-1101-316	Fuel	\$210,000.00	\$184,480.62	\$25,519.38
502-1101-317	Lubricants	\$15,000.00	\$8,314.47	\$6,685.53
502-1101-318	Signs	\$17,000.00	\$16,044.59	\$955.41
502-1101-319	Tires	\$25,000.00	\$26,248.23	(\$1,248.23)
502-1101-320	Bridge Repair/Replacement	\$14,600.00	\$14,600.00	\$0.00
502-1101-461	Rentals	\$4,500.00	\$1,125.79	\$3,374.21
502-1101-462	Dust Control	\$70,000.00	\$70,249.29	(\$249.29)
502-1101-463	Seal Coating	\$210,000.00	\$211,577.28	(\$1,577.28)
502-1102-313	Supplies & Small Tools	\$85,000.00	\$80,733.30	\$4,266.70
502-1102-451	Contract Services	\$30,000.00	\$30,531.04	(\$531.04)
502-1103-214	Uniforms (Fleet Maint.)	\$750.00	\$272.49	\$477.51
502-1103-311	Office Supplies (Fleet Maint.)	\$500.00	\$21.57	\$478.43
502-1103-313	Supplies & Small Tools (Fleet Maint.)	\$30,000.00	\$27,563.07	\$2,436.93
502-1103-317	Lubricants (Fleet Maint.)	\$7,850.00	\$3,955.40	\$3,894.60
502-1103-319	Tires (Fleet Maint.)	\$15,000.00	\$11,722.03	\$3,277.97
502-1103-451	Contract Services (Fleet Maint.)	\$15,000.00	\$13,078.17	\$1,921.83
Column Totals =		\$1,187,200.00	\$1,120,198.89	\$67,001.11

Daily Work History & Materials Used

Period: 8/1/2014 - 8/31/2014

(By Location)

All Assignments

Work: All categories and types

Caldwell County

Work done in Area: Precinct 1

CR 186 OLD KELLEY RD (CR 185 to E.FM 20)

Date	Work Done	R&B Material Used	Amount Used	Expense
8/5/2014	Hauled off brush			

CR 194 CLEAR FORK RD (From CR 205 to Hwy. 86)

Date	Work Done	R&B Material Used	Amount Used	Expense
8/22/2014	Patched road surface (1.1 miles) (Type D - 3 T.)	Type D Cold Mix	3 ton(s)	\$186.00
			Location Total =	\$186.00

CR 196 BROWNSBORO LN (From FM 1322 to CR 205)

Date	Work Done	R&B Material Used	Amount Used	Expense
8/6/2014	Put up COUNTY road name sign (@ CR 205)	County Road Name Sign	2 each	\$13.90
			Location Total =	\$13.90

CR 197 YOUNG LN

Date	Work Done	R&B Material Used	Amount Used	Expense
8/7/2014	Removed signs (weight limit signs @ 4 corners)			
	Put up COUNTY road name sign (@ FM 1322)	County Road Name Sign	2 each	\$13.90
8/29/2014	Cleared debris or fallen tree			
			Location Total =	\$13.90

CR 202 OLD MCMAHAN RD (C/L to FM 713)

Date	Work Done	R&B Material Used	Amount Used	Expense
8/6/2014	Put up COUNTY road name sign (@ CR 203)	County Road Name Sign	2 each	\$13.90
			Location Total =	\$13.90

CR 205 SEAWILLOW RD (From No. FM 1322 to CR 197)

Date	Work Done	R&B Material Used	Amount Used	Expense
8/11/2014	Hauled off brush (4.5 miles)			
8/22/2014	Patched road surface (4.5 miles) (Type D - 2 T.)	Type D Cold Mix	2 ton(s)	\$124.00
			Location Total =	\$124.00

Daily Work History & Materials Used
(By Location)

Period: 8/1/2014 - 8/31/2014
Work: All categories and types

All Assignments
Caldwell County

Work done in Area: Precinct 1

CR 205 SEAWILLOW RD (From CR 197 to FM 1322 So.)

Date	Work Done	R&B Material Used	Amount Used	Expense
8/6/2014	Put up 'Bridge Load Limit' sign (Installed 5000 wt. limit @ six mile branch)	Load Zone Bridge	2 each	\$0.00
8/11/2014	Hauled off brush (3 miles)			
8/22/2014	Patched road surface (3 miles) (Type D - 2 T.)	Type D Cold Mix	2 ton(s)	\$124.00
			Location Total =	\$124.00

CR 208 SOUTH LANE

Date	Work Done	R&B Material Used	Amount Used	Expense
8/8/2014	Trimmed brush or trees (0.4 miles)			
8/12/2014	Cleared debris or fallen tree (0.1 miles)			
8/13/2014	Trimmed brush or trees (0.2 miles)			
8/25/2014	Cleared debris or fallen tree			

CR 209 BRUSHY BRANCH RD

Date	Work Done	R&B Material Used	Amount Used	Expense
8/14/2014	Trimmed brush or trees (0.1 miles)			
8/26/2014	Hauled off brush			

CR 212 REAVIS RD

Date	Work Done	R&B Material Used	Amount Used	Expense
8/11/2014	Repaired wash - Type A - 12 T.	Type A Black Base	12 ton(s)	\$720.00
8/18/2014	Installed (2) "Dip" signs	#30901 - 10' Green U-Channel Post	2 each	\$39.18
		#W8-2 - "Dip" - (24x24)	2 each	\$62.00
			Location Total =	\$821.18

CR 213A ROBIN RANCH RD

Date	Work Done	R&B Material Used	Amount Used	Expense
8/11/2014	Repaired wash - Type A - 12 T.	Type A Black Base	12 ton(s)	\$720.00
			Location Total =	\$720.00

Daily Work History & Materials Used
(By Location)

Period: 8/1/2014 - 8/31/2014
Work: All categories and types

All Assignments
Caldwell County

Work done in Area: Precinct 1

CR 214 GRAHAM RD

Date	Work Done	R&B Material Used	Amount Used	Expense
8/13/2014	Bladed surface; added base (0.1 miles) (3/4" base - 96 T.)	1" Non-Spec Base	96 ton(s)	\$432.00
8/14/2014	Bladed surface; added base (0.1 miles) (3/4" base - 24 T.)	3/4" base to dust	24 ton(s)	\$384.00
			Location Total =	\$816.00

CR 215 WESTWOOD RD

Date	Work Done	R&B Material Used	Amount Used	Expense
8/8/2014	Bladed surface (2.1 miles)			
	Applied oil for dust control (5 miles) (SS1 - 400 Gal.)	SS1 Slow Set Emulsion-Pick up	400 gallon(s)	\$1,008.00
8/12/2014	Hauled off brush (2.1 miles)			
8/25/2014	Trimmed brush or trees			
8/28/2014	Removed post			
			Location Total =	\$1,008.00

CR 216 PIN OAK RD

Date	Work Done	R&B Material Used	Amount Used	Expense
8/8/2014	Bladed surface (0.1 miles) (Spot bladed)			

Material Total for this Area = \$3,840.88

Daily Work History & Materials Used
(By Location)

Period: 8/1/2014 - 8/31/2014
Work: All categories and types

All Assignments
Caldwell County

Work done in Area: Precinct 2

CR 35 HACKBERRY ST

Date	Work Done	R&B Material Used	Amount Used	Expense
8/1/2014	Mowed grass (0.2 miles)			

CR 90 PEBBLESTONE RD

Date	Work Done	R&B Material Used	Amount Used	Expense
8/15/2014	Bladed surface (1 mile)			

CR 105 RIVER PARK RD

Date	Work Done	R&B Material Used	Amount Used	Expense
8/27/2014	Cleared debris or fallen tree			

CR 115 BUGTUSSLE LANE (FM 671 to CR 112)

Date	Work Done	R&B Material Used	Amount Used	Expense
8/14/2014	Bladed surface; added base (0.1 miles) (3/4" base - 36 T.)	3/4" base to dust	36 ton(s)	\$576.00
8/15/2014	Bladed surface; added base (6 miles) (3/4" Base - 60 T.)	3/4" base to dust	60 ton(s)	\$960.00
8/18/2014	Bladed surface; added base (0.1 miles) (3/4" base - 48 T.)	3/4" base to dust	48 ton(s)	\$768.00
8/20/2014	Bladed surface; added base (0.1 miles) (3/4" base - 36 T.)	3/4" base to dust	36 ton(s)	\$576.00
8/21/2014	Repaired driveway entrance -also culvert - Type A - 12 T.	Type A Black Base	12 ton(s)	\$720.00
8/28/2014	Trimmed brush or trees (1.1 miles)			

Location Total = \$3,600.00

CR 115 WASHBURN RD (FM 2984 to FM 671)

Date	Work Done	R&B Material Used	Amount Used	Expense
8/1/2014	Mowed grass (2 miles) (CR 246 to FM 671) Mowed grass (1.8 miles)			

Daily Work History & Materials Used
(By Location)

Period: 8/1/2014 - 8/31/2014
Work: All categories and types

All Assignments
Caldwell County

Work done in Area: Precinct 2

CR 115 WASHBURN RD (FM 2984 to FM 671)

Date	Work Done	R&B Material Used	Amount Used	Expense
------	-----------	-------------------	-------------	---------

CR 117 MERIDIAN LN

Date	Work Done	R&B Material Used	Amount Used	Expense
------	-----------	-------------------	-------------	---------

8/1/2014	Patched road surface (0.9 miles) (Type D - .50 T.)	Type D Cold Mix	0.5 ton(s)	\$31.00
----------	--	-----------------	------------	---------

Location Total = \$31.00

CR 118 STAIRTOWN LP (Hwy. 80 to Hwy. 80)

Date	Work Done	R&B Material Used	Amount Used	Expense
------	-----------	-------------------	-------------	---------

8/15/2014	Put up 'Speed Limit' sign	#30901 - 10' Green U-Channel Post	2 each	\$39.18
-----------	---------------------------	-----------------------------------	--------	---------

		#R2-1-30 - Speed Limit 30 - (18x24)	2 each	\$46.50
--	--	-------------------------------------	--------	---------

Location Total = \$85.68

CR 119 STAIRTOWN RD

Date	Work Done	R&B Material Used	Amount Used	Expense
------	-----------	-------------------	-------------	---------

8/1/2014	Patched road surface (0.8 miles) (Type D - 1/2T.)	Type D Cold Mix	0.5 ton(s)	\$31.00
----------	---	-----------------	------------	---------

8/15/2014	Put up 'Speed Limit' sign	#30901 - 10' Green U-Channel Post	2 each	\$39.18
-----------	---------------------------	-----------------------------------	--------	---------

		#R2-1-30 - Speed Limit 30 - (18x24)	2 each	\$46.50
--	--	-------------------------------------	--------	---------

Location Total = \$116.68

CR 120 PECAN CT.

Date	Work Done	R&B Material Used	Amount Used	Expense
------	-----------	-------------------	-------------	---------

8/5/2014	Applied oil for dust control (0.5 miles) (SS1 - 66.6 Gals.)	SS1 Slow Set Emulsion-Pick up	66.6 gallon(s)	\$167.83
----------	---	-------------------------------	----------------	----------

Location Total = \$167.83

CR 121 SCENIC VIEW RD.

Date	Work Done	R&B Material Used	Amount Used	Expense
------	-----------	-------------------	-------------	---------

8/5/2014	Applied oil for dust control (0.5 miles) (SS1 - 66.6 Gals.)	SS1 Slow Set Emulsion-Pick up	66.6 gallon(s)	\$167.83
----------	---	-------------------------------	----------------	----------

Location Total = \$167.83

CR 122 AUSTIN RD

Date	Work Done	R&B Material Used	Amount Used	Expense
------	-----------	-------------------	-------------	---------

Daily Work History & Materials Used
(By Location)

Period: 8/1/2014 - 8/31/2014
Work: All categories and types

All Assignments
Caldwell County

Work done in Area: Precinct 2

CR 122 AUSTIN RD

Date	Work Done	R&B Material Used	Amount Used	Expense
8/5/2014	Applied oil for dust control (0.5 miles) (SS1 - 66.6 Gals.)	SS1 Slow Set Emulsion-Pick up	66.6 gallon(s)	\$167.83
8/6/2014	Repair base failure (Type A - 6 tons)	Type A Black Base	6 ton(s)	\$360.00
			Location Total =	\$527.83

CR 123 UNION HILL RD

Date	Work Done	R&B Material Used	Amount Used	Expense
8/1/2014	Mowed grass (1.5 miles)			

CR 124 SUNSET TR

Date	Work Done	R&B Material Used	Amount Used	Expense
8/1/2014	Mowed grass (0.5 miles)			

CR 127A LITTLE LN

Date	Work Done	R&B Material Used	Amount Used	Expense
8/18/2014	Replaced (2) 10' Post	#30901 - 10' Green U-Channel Post	2 each	\$39.18
			Location Total =	\$39.18

CR 130 SODA SPRINGS RD (FM 86 to FM 1322)

Date	Work Done	R&B Material Used	Amount Used	Expense
8/7/2014	Removed dirt from r.o.w./hauled to CR 128			

CR 130 SODA SPRINGS RD (FM 1322 to CR 139)

Date	Work Done	R&B Material Used	Amount Used	Expense
8/25/2014	Bladed surface			
8/26/2014	Patched road surface (1.5 miles) (Type D - 6 T.)	Type D Cold Mix	6 ton(s)	\$372.00
8/27/2014	Blade cold mix on road surface (Type D - 144 T.)	Type D Cold Mix	144 ton(s)	\$8,928.00
	Patched road surface (1.5 miles) (Type D - 2 T.)	Type D Cold Mix	2 ton(s)	\$124.00

Daily Work History & Materials Used
(By Location)

Period: 8/1/2014 - 8/31/2014
Work: All categories and types

All Assignments
Caldwell County

Work done in Area: Precinct 2

CR 130 SODA SPRINGS RD (FM 1322 to CR 139)

Date	Work Done	R&B Material Used	Amount Used	Expense
8/28/2014	Blade cold mix on road surface (6 miles) (Type D - 144 T.)	Type D Cold Mix	144 ton(s)	\$8,928.00
			Location Total =	\$18,352.00

CR 131 BIGGS RD

Date	Work Done	R&B Material Used	Amount Used	Expense
8/13/2014	Replaced road culvert (3/4" base - 24 T.)	24"x 24" Arched Culvert Pipe 3/4" base to dust	1 each 24 ton(s)	\$477.60 \$384.00
8/26/2014	Bladed surface; added base (0.5 miles) (3/4" base - 72 T.)	3/4" base to dust	24 ton(s) 72 ton(s)	\$384.00 \$1,152.00
			Location Total =	\$2,397.60

CR 133 IVY SWITCH RD

Date	Work Done	R&B Material Used	Amount Used	Expense
8/12/2014	Bladed surface (1 mile) (Spot bladed)			
8/27/2014	Patched road surface (2.4 miles) (Type D - 4 T.)	Type D Cold Mix	4 ton(s)	\$248.00
			Location Total =	\$248.00

CR 134 MULECREEK RD (Hwy. 90 to CR 133)

Date	Work Done	R&B Material Used	Amount Used	Expense
8/12/2014	Bladed surface (1 mile) (Spot bladed)			

CR 134 MULECREEK RD (CR 133 to Gonzales Cty Line)

Date	Work Done	R&B Material Used	Amount Used	Expense
8/11/2014	Bladed surface (3.1 miles)			

CR 135 WHISPER RD

Date	Work Done	R&B Material Used	Amount Used	Expense
8/14/2014	Bladed surface; added base (1.4 miles) (3/4" Base - 48 T.)	3/4" base to dust	48 ton(s)	\$768.00

Daily Work History & Materials Used
(By Location)

All Assignments
Caldwell County

Period: 8/1/2014 - 8/31/2014
Work: All categories and types

Work done in Area: Precinct 2

CR 135 WHISPER RD

Date	Work Done	R&B Material Used	Amount Used	Expense
8/15/2014	Bladed surface; added base (1 mile) (3/4" base - 123 T.)	3/4" base to dust	123 ton(s)	\$1,968.00
8/21/2014	Bladed surface (1.6 miles)			
			Location Total =	\$2,736.00

CR 138 MCNEIL CREEK RD

Date	Work Done	R&B Material Used	Amount Used	Expense
8/29/2014	Hauled off brush Trimmed brush or trees			

CR 140 WATTSVILLE RD

Date	Work Done	R&B Material Used	Amount Used	Expense
8/4/2014	Hauled off brush (1 mile)			

CR 141 TENNEY CREEK RD

Date	Work Done	R&B Material Used	Amount Used	Expense
8/5/2014	Hauled off brush			
8/6/2014	Hauled off brush (3 miles) (From FM 86 end)			
8/13/2014	Put up COUNTY road name sign (@ CR 140)	County Road Name Sign	2 each	\$13.90
			Location Total =	\$13.90

CR 143 CHUCKWAGON RD

Date	Work Done	R&B Material Used	Amount Used	Expense
8/6/2014	Hauled off brush (3.5 miles)			
8/18/2014	Bladed surface; added base (1 mile) (3/4" base - 96 T.)	3/4" base to dust	96 ton(s)	\$1,536.00
8/20/2014	Bladed surface; added base (1 mile) (3/4" base - 120 T.)	3/4" base to dust	120 ton(s)	\$1,920.00
8/21/2014	Bladed surface (2.5 miles)			

Daily Work History & Materials Used
(By Location)

All Assignments
Caldwell County

Period: 8/1/2014 - 8/31/2014
Work: All categories and types

Work done in Area: Precinct 2

CR 143 CHUCKWAGON RD

Date	Work Done	R&B Material Used	Amount Used	Expense
8/22/2014	Bladed surface; added base (0.5 miles) (3/4" base - 72 T.)	3/4" base to dust	72 ton(s)	\$1,152.00
			Location Total =	\$4,608.00

CR 144A EBBON RD

Date	Work Done	R&B Material Used	Amount Used	Expense
8/29/2014	Hauled off brush			

CR 144 ROLLING OAKS DR

Date	Work Done	R&B Material Used	Amount Used	Expense
8/29/2014	Trimmed brush or trees			
	Hauled off brush			

CR 146 CREEKSIDE DR

Date	Work Done	R&B Material Used	Amount Used	Expense
8/13/2014	Put up COUNTY road name sign (0.5 miles) (@ CR 141)			

CR 147 SPARROW TR

Date	Work Done	R&B Material Used	Amount Used	Expense
8/28/2014	Applied oil for dust control (1 mile) (SS1 - 66.67 G.)	SS1 Slow Set Emulsion-Pick up	66.67 gallon(s)	\$168.01
			Location Total =	\$168.01

CR 150 KIRK CORNERS

Date	Work Done	R&B Material Used	Amount Used	Expense
8/1/2014	Cleaned out or fixed road culvert			
8/7/2014	Bladed surface (0.2 miles) (Spot bladed)			

Daily Work History & Materials Used
(By Location)

Period: 8/1/2014 - 8/31/2014
Work: All categories and types

All Assignments
Caldwell County

Work done in Area: Precinct 2

CR 151 SANDY FORK RD

Date	Work Done	R&B Material Used	Amount Used	Expense
8/1/2014	Cleaned out or fixed road culvert (Type A - 12 T.)	Type A Black Base	12 ton(s)	\$720.00
8/4/2014	Bladed surface; added base (3/4" base - 120 T.)	3/4" base to dust	120 ton(s)	\$1,920.00
			Location Total =	\$2,640.00

CR 152 CHALK RD

Date	Work Done	R&B Material Used	Amount Used	Expense
8/7/2014	Bladed surface (0.2 miles) (Spot bladed)			

CR 156 WOLF RUN RD

Date	Work Done	R&B Material Used	Amount Used	Expense
8/5/2014	Applied oil for dust control (2 miles) (SS1 - 200 Gals.)	SS1 Slow Set Emulsion-Pick up	200 gallon(s)	\$504.00
			Location Total =	\$504.00

CR 157 DELHI LOOP

Date	Work Done	R&B Material Used	Amount Used	Expense
8/22/2014	Cleared debris or fallen tree (0.5 miles)			

CR 158 TAYLORSVILLE RD (FM 86 to FM 713)

Date	Work Done	R&B Material Used	Amount Used	Expense
8/26/2014	Cleared debris or fallen tree			
8/28/2014	Hauled off brush (0.1 miles)			

CR 159 PETTYTOWN RD (E.FM 20 to FM 86)

Date	Work Done	R&B Material Used	Amount Used	Expense
8/29/2014	Cleared debris or fallen tree			

CR 159 PETTYTOWN RD (FM 86 to County Line)

Date	Work Done	R&B Material Used	Amount Used	Expense
------	-----------	-------------------	-------------	---------

Daily Work History & Materials Used
(By Location)

Period: 8/1/2014 - 8/31/2014
Work: All categories and types

All Assignments
Caldwell County

Work done in Area: Precinct 2

CR 159 PETTYTOWN RD (FM 86 to County Line)

Date	Work Done	R&B Material Used	Amount Used	Expense
8/14/2014	Replaced road culvert (3/4" base - 36 T. - 18"x24"A	18"x24" Arched Culvert	1 each	\$378.00
		3/4" base to dust	36 ton(s)	\$576.00
			Location Total =	\$954.00

CR 160 OLD COLONY LINE RD (E.FM 20 to FM 713)

Date	Work Done	R&B Material Used	Amount Used	Expense
8/25/2014	Bladed surface (2 miles)			
8/26/2014	Bladed surface (2 miles)			
8/27/2014	Applied oil for dust control (2 miles) (SS1 - 200 G.)	SS1 Slow Set Emulsion-Pick up	200 gallon(s)	\$504.00
8/28/2014	Applied oil for dust control (2.5 miles) (SS1 - 200 G.)	SS1 Slow Set Emulsion-Pick up	200 gallon(s)	\$504.00
			Location Total =	\$1,008.00

CR 160 OLD COLONY LINE RD (FM 86 to FM 3158)

Date	Work Done	R&B Material Used	Amount Used	Expense
8/21/2014	Trimmed brush or trees ;Installed "Bus Stop Ahead"	"Slow Children At Play" W/Symbol (18x24)	2 each	\$46.50
		#30901 - 10' Green U-Channel Post	2 each	\$39.18
			Location Total =	\$85.68

CR 199 LAKE RD

Date	Work Done	R&B Material Used	Amount Used	Expense
8/29/2014	Cleared debris or fallen tree			

CR 207 BURDETTE WELLS RD (From Bridge to FM 1322)

Date	Work Done	R&B Material Used	Amount Used	Expense
8/5/2014	Cleared debris or fallen tree (0.1 miles)			
8/6/2014	Cleared debris or fallen tree (0.1 miles)			

CR 246 BURNS RD

Date	Work Done	R&B Material Used	Amount Used	Expense
------	-----------	-------------------	-------------	---------

Daily Work History & Materials Used
(By Location)

Period: 8/1/2014 - 8/31/2014
Work: All categories and types

All Assignments
Caldwell County

Work done in Area: Precinct 2

CR 246 BURNS RD

Date	Work Done	R&B Material Used	Amount Used	Expense
8/1/2014	Mowed grass (0.4 miles)			

CR 248 TREETOP LANE

Date	Work Done	R&B Material Used	Amount Used	Expense
8/1/2014	Patched road surface (0.4 miles) (Type D - .50 T.)	Type D Cold Mix	0.5 ton(s)	\$31.00
			Location Total =	\$31.00

CR 249 SANDY PINE RD

Date	Work Done	R&B Material Used	Amount Used	Expense
8/12/2014	Bladed surface (0.6 miles)			

CR 251 TURKEY HOLLOW RD

Date	Work Done	R&B Material Used	Amount Used	Expense
8/22/2014	Bladed surface (1.5 miles)			

CR 278 MUSTANG ST

Date	Work Done	R&B Material Used	Amount Used	Expense
8/22/2014	Put up 'Stop' sign	#30901 - 10' Green U-Channel Post	1 each	\$19.59
		#R1-1-30 - "Stop Sign" - 30"	1 each	\$38.00
			Location Total =	\$57.59

CR 302 MCNEIL RD

Date	Work Done	R&B Material Used	Amount Used	Expense
8/25/2014	Bladed surface (0.6 miles)			

CR 305 REED CREEK DR

Date	Work Done	R&B Material Used	Amount Used	Expense
8/6/2014	Bladed surface; added base (1.8 miles) (3/4" base - 72 T.)	3/4" base to dust	72 ton(s)	\$1,152.00

Daily Work History & Materials Used
(By Location)

Period: 8/1/2014 - 8/31/2014
Work: All categories and types

All Assignments
Caldwell County

Work done in Area: Precinct 2

CR 305 REED CREEK DR

Date	Work Done	R&B Material Used	Amount Used	Expense
8/7/2014	Bladed surface; added base (0.1 miles) (3/4" 24 T.)	3/4" base to dust	24 ton(s)	\$384.00
8/22/2014	Cleared debris or fallen tree (0.5 miles)			
			Location Total =	\$1,536.00
			Material Total for this Area =	\$40,075.81

Daily Work History & Materials Used
(By Location)

Period: 8/1/2014 - 8/31/2014
Work: All categories and types

All Assignments
Caldwell County

Work done in Area: Precinct 3

CR 36 GARRETT TR

Date	Work Done	R&B Material Used	Amount Used	Expense
8/1/2014	Patched road surface (1.1 miles) (Type D - 1T.)	Type D Cold Mix	1 ton(s)	\$62.00
8/6/2014	Cleaned ditches (1.1 miles)			
8/7/2014	Cleaned ditches (0.9 miles)			
8/8/2014	Cleaned ditches (0.2 miles)			
8/13/2014	Blade cold mix on road surface (0.1 miles) (Type D - 101.30 T.)	Type D Cold Mix	101.3 ton(s)	\$6,280.60
8/14/2014	Blade cold mix on road surface (0.1 miles) (Type D - 103.43)	Type D Cold Mix	103.43 ton(s)	\$6,412.66
	Applied oil for dust control (0.2 miles) (SS1 - 25 G.)	SS1 Slow Set Emulsion-Pick up	25 gallon(s)	\$63.00
8/15/2014	Blade cold mix on road surface (0.1 miles) (Type D - 157.10 T.)	Type D Cold Mix	157.1 ton(s)	\$9,740.20
8/18/2014	Blade cold mix on road surface (0.2 miles) (Type D - 162.27 T.)	Type D Cold Mix	162.27 ton(s)	\$10,060.74
	Applied oil for dust control (1 mile) (SS1 - 150 G.)	SS1 Slow Set Emulsion-Pick up	150 gallon(s)	\$378.00
8/19/2014	Blade cold mix on road surface (0.2 miles) (Type D - 135.39 T.)	Type D Cold Mix	135.39 ton(s)	\$8,394.18
8/20/2014	Blade cold mix on road surface (0.2 miles) (Type D - 224.85 T.)	Type D Cold Mix	224.85 ton(s)	\$13,940.70
8/21/2014	Blade cold mix on road surface (0.2 miles) (Type D - 219.71 T.)	Type D Cold Mix	219.71 ton(s)	\$13,622.02
8/25/2014	Blade cold mix on road surface (0.1 miles) (Type D - 96 T.)	Type D Cold Mix	96 ton(s)	\$5,952.00
			Location Total =	\$74,906.10

CR 37 CITY VIEW DR

Date	Work Done	R&B Material Used	Amount Used	Expense
8/1/2014	Patched road surface (0.4 miles) (Type D - .50T.)	Type D Cold Mix	0.5 ton(s)	\$31.00
8/22/2014	Cleaned ditches (0.4 miles)			
			Location Total =	\$31.00

CR 38 KOEGLER DR

Date	Work Done	R&B Material Used	Amount Used	Expense
------	-----------	-------------------	-------------	---------

Daily Work History & Materials Used
(By Location)

Period: 8/1/2014 - 8/31/2014
Work: All categories and types

All Assignments
Caldwell County

Work done in Area: Precinct 3

CR 38 KOEGLER DR

Date	Work Done	R&B Material Used	Amount Used	Expense
8/1/2014	Patched road surface (0.4 miles) (Type D - .50 T.)	Type D Cold Mix	0.5 ton(s)	\$31.00
8/22/2014	Cleaned ditches (0.4 miles)			
8/25/2014	Blade cold mix on road surface (0.2 miles) (Type D - 127.01 T.)	Type D Cold Mix	127.01 ton(s)	\$7,874.62
8/26/2014	Blade cold mix on road surface (0.1 miles) (Type D - 120 T.)	Type D Cold Mix	120 ton(s)	\$7,440.00
			Location Total =	\$15,345.62

CR 39 COTTONFIELD DR

Date	Work Done	R&B Material Used	Amount Used	Expense
8/22/2014	Cleaned ditches (0.2 miles)			
8/26/2014	Blade cold mix on road surface (0.1 miles) (Type D - 101.93 T.)	Type D Cold Mix	101.93 ton(s)	\$6,319.66
			Location Total =	\$6,319.66

CR 40 GLOVER LN

Date	Work Done	R&B Material Used	Amount Used	Expense
8/6/2014	Applied oil for dust control (0.2 miles) (SS1 - 25 G.)	SS1 Slow Set Emulsion-Pick up	25 gallon(s)	\$63.00
			Location Total =	\$63.00

CR 59 DOVE HILL CT

Date	Work Done	R&B Material Used	Amount Used	Expense
8/28/2014	Applied oil for dust control (0.5 miles) (SS1 - 66.67 G.)	SS1 Slow Set Emulsion-Pick up	66.67 gallon(s)	\$168.01
			Location Total =	\$168.01

CR 61 DOVE HILL DR

Date	Work Done	R&B Material Used	Amount Used	Expense
8/1/2014	Rolled road (also removed "work signs")			
8/28/2014	Applied oil for dust control (1 mile) (SS1 - 66.67 G.)	SS1 Slow Set Emulsion-Pick up	66.67 gallon(s)	\$168.01
			Location Total =	\$168.01

Daily Work History & Materials Used
(By Location)

Period: 8/1/2014 - 8/31/2014
Work: All categories and types

All Assignments
Caldwell County

Work done in Area: Precinct 3

CR 100 COUNTRY LN

Date	Work Done	R&B Material Used	Amount Used	Expense
8/18/2014	Installed 6' post w/reflector	#30147 - Yellow Delineator - 4x4	5 each	\$8.50
		#30920 - 6' Green Delineator Post	6 each	\$41.88
			Location Total =	\$50.38

CR 101 OLD BASTROP RD (Hwy. 80 to River)

Date	Work Done	R&B Material Used	Amount Used	Expense
8/27/2014	Installed "No Parking" signs	#30901 - 10' Green U-Channel Post	6 each	\$117.54
		No Parking Here to Bridge	6 each	\$70.50
8/29/2014	Installed "double arrow"/"single arrow" signs			
			Location Total =	\$188.04

CR 102 MARTINDALE RD

Date	Work Done	R&B Material Used	Amount Used	Expense
8/21/2014	Cleared debris or fallen tree			

CR 103 S.E. RIVER RD

Date	Work Done	R&B Material Used	Amount Used	Expense
8/7/2014	Repaired bridge approaches (Type A - 24 T.) also trimmed trees, added oil	SS1 Slow Set Emulsion-Pick up	200 gallon(s)	\$504.00
		Type A Black Base	24 ton(s)	\$1,440.00
8/8/2014	Applied oil for dust control (1.5 miles) (SS1 - 200 Gals.)	SS1 Slow Set Emulsion-Pick up	200 gallon(s)	\$504.00
			Location Total =	\$2,448.00

CR 103A SPRING RIVER DR

Date	Work Done	R&B Material Used	Amount Used	Expense
8/22/2014	Patched road surface (0.6 miles) (Type D-2 T.)	Type D Cold Mix	2 ton(s)	\$124.00
			Location Total =	\$124.00

CR 107 DICKERSON RD

Date	Work Done	R&B Material Used	Amount Used	Expense
8/27/2014	Bladed surface; added base (1 mile) (3/4"base - 48 T.)	3/4" base to dust	48 ton(s)	\$768.00

Daily Work History & Materials Used
(By Location)

Period: 8/1/2014 - 8/31/2014
Work: All categories and types

All Assignments
Caldwell County

Work done in Area: Precinct 3

CR 107 DICKERSON RD

Date	Work Done	R&B Material Used	Amount Used	Expense
8/28/2014	Bladed surface; added base (0.1 miles) (3/4" base - 48 T.)	3/4" base to dust	48 ton(s)	\$768.00
			Location Total =	\$1,536.00

CR 111 POLITICAL RD (Dead End)

Date	Work Done	R&B Material Used	Amount Used	Expense
8/20/2014	Bladed surface (0.9 miles)			

CR 112 CALLIHAN RD (From W.FM 20 to CR 115)

Date	Work Done	R&B Material Used	Amount Used	Expense
8/1/2014	Patched road surface (1 mile) (Type D - .50 T.)	Type D Cold Mix	0.5 ton(s)	\$31.00
			Location Total =	\$31.00

CR 177 WILLIAMSON RD (Hwy. 183 - Hwy. 21)

Date	Work Done	R&B Material Used	Amount Used	Expense
8/6/2014	Put up COUNTY road name sign (@ Camino Real)	County Road Name Sign	2 each	\$13.90
			Location Total =	\$13.90

CR 222 SCHUELKE RD

Date	Work Done	R&B Material Used	Amount Used	Expense
8/11/2014	Repaired wash @ bridge - Type A - 6 T.	Type A Black Base	6 ton(s)	\$360.00
			Location Total =	\$360.00

CR 224 HOLZ RD

Date	Work Done	R&B Material Used	Amount Used	Expense
8/8/2014	Repaired bridge approaches (Type A - 6 T.)	Type A Black Base	6 ton(s)	\$360.00
			Location Total =	\$360.00

CR 227B FRIAR CT

Date	Work Done	R&B Material Used	Amount Used	Expense
8/22/2014	Trimmed brush or trees (0.1 miles)			

Daily Work History & Materials Used
(By Location)

Period: 8/1/2014 - 8/31/2014
Work: All categories and types

All Assignments
Caldwell County

Work done in Area: Precinct 3

CR 227B FRIAR CT

Date	Work Done	R&B Material Used	Amount Used	Expense
------	-----------	-------------------	-------------	---------

CR 228 FARMERS RD

Date	Work Done	R&B Material Used	Amount Used	Expense
8/1/2014	Patched road surface (3 miles) (Type D - 1 T.)	Type D Cold Mix	1 ton(s)	\$62.00
			Location Total =	\$62.00

CR 229 MISTY LN (CR 230 to CR 228)

Date	Work Done	R&B Material Used	Amount Used	Expense
8/7/2014	Applied oil for dust control (1.5 miles) (SS1 - 175 G.)	SS1 Slow Set Emulsion-Pick up	175 gallon(s)	\$441.00
8/8/2014	Applied oil for dust control (1.5 miles) (SS1 - 150 Gals.)	SS1 Slow Set Emulsion-Pick up	150 gallon(s)	\$378.00
			Location Total =	\$819.00

CR 229 MISTY LN. (CR 228 to Hwy. 21)

Date	Work Done	R&B Material Used	Amount Used	Expense
8/18/2014	Put up 'Children At Play' sign	"Slow Children At Play" W/Symbol (18x24)	2 each	\$46.50
		#30901 - 10' Green U-Channel Post	2 each	\$39.18
		#W13-1-20 - "20 MPH" (Y/B) - (18x18)	2 each	\$28.58
			Location Total =	\$114.26

CR 230 JOLLEY RD. (Hwy. 142 to CR 104)

Date	Work Done	R&B Material Used	Amount Used	Expense
8/4/2014	Cleaned ditches (0.1 miles)			

CR 231 FIFTH ST

Date	Work Done	R&B Material Used	Amount Used	Expense
8/4/2014	Add base (@ CR 229 intersection)	3/4" base to dust	12 ton(s)	\$192.00
8/7/2014	Applied oil for dust control (0.5 miles) (SS1 - 25 G.)	SS1 Slow Set Emulsion-Pick up	25 gallon(s)	\$63.00
8/8/2014	Applied oil for dust control (0.2 miles) (SS1 - 25 Gals.)	SS1 Slow Set Emulsion-Pick up	25 gallon(s)	\$63.00

Daily Work History & Materials Used
(By Location)

Period: 8/1/2014 - 8/31/2014
Work: All categories and types

All Assignments
Caldwell County

Work done in Area: Precinct 3

CR 231 FIFTH ST

Date	Work Done	R&B Material Used	Amount Used	Expense
8/18/2014	Applied oil for dust control (0.3 miles) (SS1 - 50 G.)	SS1 Slow Set Emulsion-Pick up	50 gallon(s)	\$126.00
			Location Total =	\$444.00

CR 238 WILLIAM PETTUS RD

Date	Work Done	R&B Material Used	Amount Used	Expense
8/6/2014	Applied oil for dust control (1 mile) (SS1 - 175 G.)	SS1 Slow Set Emulsion-Pick up	175 gallon(s)	\$441.00
8/27/2014	Trimmed brush or trees (0.5 miles)			
			Location Total =	\$441.00

CR 241 RAILROAD ST

Date	Work Done	R&B Material Used	Amount Used	Expense
8/8/2014	Applied oil for dust control (0.2 miles) (SS1 - 25 Gal.)	SS1 Slow Set Emulsion-Pick up	25 gallon(s)	\$63.00
			Location Total =	\$63.00

CR 277 SENECA LOOP

Date	Work Done	R&B Material Used	Amount Used	Expense
8/6/2014	Repaired wash @ culvert - Type A - 6 T.	Type A Black Base	6 ton(s)	\$360.00
8/15/2014	Installed "No Dumping" sign	"No Dumping" (24x24)	1 each	\$31.00
		#30901 - 10' Green U-Channel Post	1 each	\$19.59
			Location Total =	\$410.59

CR 288 FOURTH ST

Date	Work Done	R&B Material Used	Amount Used	Expense
8/6/2014	Trimmed brush or trees (0.2 miles)			

Material Total for this Area = \$104,466.57

Daily Work History & Materials Used
(By Location)

All Assignments
Caldwell County

Period: 8/1/2014 - 8/31/2014
Work: All categories and types

Work done in Area: Precinct 4

CR 96 SAGE HOLLOW RD

Date	Work Done	R&B Material Used	Amount Used	Expense
8/12/2014	Bladed surface (0.5 miles)			
8/22/2014	Trimmed brush or trees			

CR 164 TUMBLEWEED TR

Date	Work Done	R&B Material Used	Amount Used	Expense
8/5/2014	Bladed surface; added base (1.5 miles) (3/4" base - 72 tons)	3/4" base to dust	72 ton(s)	\$1,152.00
8/6/2014	Bladed surface; added base (3.1 miles) (3/4" base - 96 T.)	3/4" base to dust	96 ton(s)	\$1,536.00
	Bladed surface; added base (3.1 miles) (3/4" base - 96 T.)	3/4" base to dust	96 ton(s)	\$1,536.00
8/7/2014	Hauled off brush (3.1 miles)			
	Bladed surface; added base (0.4 miles) (3/4" -120 T.)	3/4" base to dust	120 ton(s)	\$1,920.00
8/8/2014	Bladed surface; added base (0.2 miles) (3/4" base - 192 T.)	3/4" base to dust	192 ton(s)	\$3,072.00
8/18/2014	Trimmed brush or trees (0.6 miles)			
8/20/2014	Trimmed brush or trees (0.9 miles)			
			Location Total =	\$9,216.00

CR 165 SANDHOLLER RD

Date	Work Done	R&B Material Used	Amount Used	Expense
8/11/2014	Trimmed brush or trees (0.5 miles)			
8/12/2014	Trimmed brush or trees (0.5 miles)			
8/13/2014	Trimmed brush or trees (0.7 miles)			
8/14/2014	Trimmed brush or trees (1 mile)			
8/15/2014	Installed 6' post w/reflector	#30147 - Yellow Delineator - 4x4	2 each	\$3.40
		#30920 - 6' Green Delineator Post	2 each	\$13.96
			Location Total =	\$17.36

CR 167 CHAMBERLIN RD

Date	Work Done	R&B Material Used	Amount Used	Expense
------	-----------	-------------------	-------------	---------

Daily Work History & Materials Used
(By Location)

Period: 8/1/2014 - 8/31/2014
Work: All categories and types

All Assignments
Caldwell County

Work done in Area: Precinct 4

CR 167 CHAMBERLIN RD

Date	Work Done	R&B Material Used	Amount Used	Expense
8/8/2014	Cleaned out or fixed road culvert			
8/11/2014	Repaired guardrail damage			
8/12/2014	Repaired guardrail damage			
8/15/2014	Installed 6' post w/reflector	#30147 - Yellow Delineator - 4x4 #30920 - 6' Green Delineator Post	1 each 1 each	\$1.70 \$6.98
8/25/2014	Trimmed brush or trees (0.5 miles)			
			Location Total =	\$8.68

CR 168 SANDY CREEK RD

Date	Work Done	R&B Material Used	Amount Used	Expense
8/13/2014	Bladed surface (0.7 miles)			

CR 172A COUNTY LINE RD

Date	Work Done	R&B Material Used	Amount Used	Expense
8/15/2014	Installeed (2) cemetery signs	#30901 - 10' Green U-Channel Post	2 each	\$39.18
8/28/2014	Patched road surface (1 mile) (Type D - 6 T.)	Type D Cold Mix	6 ton(s)	\$372.00
8/29/2014	Patched road surface (1 mile) (Type D - 3 T.)	Type D Cold Mix	3 ton(s)	\$186.00
			Location Total =	\$597.18

CR 172 COUNTY LINE RD

Date	Work Done	R&B Material Used	Amount Used	Expense
8/19/2014	Put up warning signs & barricades	#30901 - 10' Green U-Channel Post Hinged Watch for High Water (30"x30")	1 each 1 each	\$19.59 \$61.00
			Location Total =	\$80.59

CR 174 LYTTON LN

Date	Work Done	R&B Material Used	Amount Used	Expense
8/12/2014	Bladed surface (3.3 miles) (Spot bladed)			
8/15/2014	Replaced (2) 10' post	#30901 - 10' Green U-Channel Post	2 each	\$39.18
	Applied oil for dust control (1 mile) (SS1 - 100 G.)	SS1 Slow Set Emulsion-Pick up	100 gallon(s)	\$252.00

Daily Work History & Materials Used
(By Location)

Period: 8/1/2014 - 8/31/2014
Work: All categories and types

All Assignments
Caldwell County

Work done in Area: Precinct 4

CR 174 LYTTON LN

Date	Work Done	R&B Material Used	Amount Used	Expense
8/18/2014	Applied oil for dust control (1.7 miles) (SS1 - 400 G.)	SS1 Slow Set Emulsion-Pick up	400 gallon(s)	\$1,008.00
8/21/2014	Bladed surface; added base (1 mile) (3/4" base - 72 T.)	3/4" base to dust	72 ton(s)	\$1,152.00
	Bladed surface; added base (1 mile) Spot bladed - (3/4" base - 72 T.)	3/4" base to dust	72 ton(s)	\$1,152.00
8/22/2014	Bladed surface; added base (0.3 miles) (3/4" base - 12 T.)	3/4" base to dust	12 ton(s)	\$192.00
	Trimmed brush or trees (0.5 miles)			
			Location Total =	\$3,795.18

CR 175 TOMAHAWK TR

Date	Work Done	R&B Material Used	Amount Used	Expense
8/12/2014	Bladed surface (2 miles)			
8/15/2014	Applied oil for dust control (2 miles) (SS1 - 300 G.)	SS1 Slow Set Emulsion-Pick up	300 gallon(s)	\$756.00
	Installed (9) "chevron" signs	#30920 - 6' Green Delineator Post	9 each	\$62.82
		#W1-8R - Warning "Chevron" - (18x24)	9 each	\$209.25
8/22/2014	Bladed surface; added base (2 miles) (3/4" base - 36 T.)	3/4" base to dust	36 ton(s)	\$576.00
			Location Total =	\$1,604.07

CR 177 WILLIAMSON RD (FM 1854 to CR 176)

Date	Work Done	R&B Material Used	Amount Used	Expense
8/1/2014	Bladed surface (1 mile)			
8/4/2014	Bladed surface (1.6 miles)			

CR 178 HOMANN RD

Date	Work Done	R&B Material Used	Amount Used	Expense
8/1/2014	Bladed surface (2 miles)			

Daily Work History & Materials Used
(By Location)

All Assignments
Caldwell County

Period: 8/1/2014 - 8/31/2014
Work: All categories and types

Work done in Area: Precinct 4

CR 179 HOMANNVILLE TR (FM 1185 to Hwy. 183)

Date	Work Done	R&B Material Used	Amount Used	Expense
8/1/2014	Applied oil for dust control (6 miles) (SS1 - 600 Gals.)	SS1 Slow Set Emulsion-Pick up	600 gallon(s)	\$1,512.00
8/26/2014	Applied oil for dust control (4 miles) (SS1 - 400 G.) Bladed surface (1 mile) (Spot bladed)	SS1 Slow Set Emulsion-Pick up	400 gallon(s)	\$1,008.00
			Location Total =	\$2,520.00

CR 182 DRY CREEK RD (Gravel to CR 183)

Date	Work Done	R&B Material Used	Amount Used	Expense
8/6/2014	Applied oil for dust control (3 miles) (SS1 - 300 G.)	SS1 Slow Set Emulsion-Pick up	300 gallon(s)	\$756.00
			Location Total =	\$756.00

CR 185 WITTER RD (From Stoney Daile to FM 672)

Date	Work Done	R&B Material Used	Amount Used	Expense
8/7/2014	Hauled off brush (2.7 miles)			
8/12/2014	Bladed surface (2.7 miles)			
8/13/2014	Hauled off brush			

CR 186 OLD KELLEY RD (From C/L to bridge)

Date	Work Done	R&B Material Used	Amount Used	Expense
8/20/2014	Bladed surface; added base (0.8 miles) (3/4" Base - 36 T.)	3/4" base to dust	36 ton(s)	\$576.00
8/21/2014	Bladed surface; added base (0.1 miles) (3/4" base - 72 T.)	3/4" base to dust	72 ton(s)	\$1,152.00
8/22/2014	Bladed surface; added base (0.2 miles) (3/4" base - 48 T.)	3/4" base to dust	48 ton(s)	\$768.00
			Location Total =	\$2,496.00

CR 189 THOMPSON RD

Date	Work Done	R&B Material Used	Amount Used	Expense
8/15/2014	Installed 6' post w/reflector	#30147 - Yellow Delineator - 4x4 #30920 - 6' Green Delineator Post	2 each 2 each	\$3.40 \$13.96

Daily Work History & Materials Used
(By Location)

Period: 8/1/2014 - 8/31/2014
Work: All categories and types

All Assignments
Caldwell County

Work done in Area: Precinct 4

CR 189 THOMPSON RD

Date	Work Done	R&B Material Used	Amount Used	Expense
			Location Total =	\$17.36

CR 256 CAT BRANCH RD

Date	Work Done	R&B Material Used	Amount Used	Expense
8/13/2014	Bladed surface (0.3 miles)			

Material Total for this Area = \$21,108.42

Daily Work History & Materials Used
(By Location)

Period: 8/1/2014 - 8/31/2014
Work: All categories and types

All Assignments
Caldwell County

Work done in Area: Pcts 1 & 2

CR 114 MINERAL SPRINGS RD (Hwy. 183 to FM 671)

Date	Work Done	R&B Material Used	Amount Used	Expense
8/25/2014	Bladed surface; added base (0.1 miles) (3/4" base - 48 T.)	3/4" base to dust	48 ton(s)	\$768.00
8/26/2014	Bladed surface; added base (0.1 miles) (3/4" base = 48 T.)	3/4" base to dust	48 ton(s)	\$768.00
8/27/2014	Bladed surface; added base (0.1 miles) (3/4" base - 48 T.)	3/4" base to dust	48 ton(s)	\$768.00
8/28/2014	Bladed surface; added base (0.1 miles) (3/4" base - 60 T.)	3/4" base to dust	60 ton(s)	\$960.00
			Location Total =	\$3,264.00

CR 198 FOX LN

Date	Work Done	R&B Material Used	Amount Used	Expense
8/21/2014	Repaired culvert - Type A - 4 T.	Type A Black Base	4 ton(s)	\$240.00
8/29/2014	Cleared debris or fallen tree			
			Location Total =	\$240.00

CR 207 BURDETTE WELLS RD (From S. US HWY 183 to Bridge)

Date	Work Done	R&B Material Used	Amount Used	Expense
8/4/2014	Trimmed brush or trees (0.1 miles)			
8/5/2014	Cleared debris or fallen tree (0.1 miles)			
8/6/2014	Cleared debris or fallen tree (0.1 miles)			
8/11/2014	Repaired wash @ bridge - Type A - 24 T.	Type A Black Base	24 ton(s)	\$1,440.00
			Location Total =	\$1,440.00

Material Total for this Area = \$4,944.00

Daily Work History & Materials Used
(By Location)

Period: 8/1/2014 - 8/31/2014
Work: All categories and types

All Assignments
Caldwell County

Work done in Area: Pcts 1 & 3
--

CR 109A TOWER RD

Date	Work Done	R&B Material Used	Amount Used	Expense
8/14/2014	Applied oil for dust control (1 mile) (SS1 - 175 G.)	SS1 Slow Set Emulsion-Pick up	175 gallon(s)	\$441.00
8/15/2014	Applied oil for dust control (1 mile) (SS1 - 200 G.)	SS1 Slow Set Emulsion-Pick up	200 gallon(s)	\$504.00
			Location Total =	\$945.00

CR 230 JOLLEY RD (CR 104 to FM 2720)

Date	Work Done	R&B Material Used	Amount Used	Expense
8/5/2014	Cleaned ditches (0.1 miles) (Type A - 12 T.)	Type A Black Base	12 ton(s)	\$720.00
8/7/2014	Applied oil for dust control (0.7 miles) (SS1 - 200 G.)	SS1 Slow Set Emulsion-Pick up	200 gallon(s)	\$504.00
			Location Total =	\$1,224.00

	Material Total for this Area =	\$2,169.00
--	---------------------------------------	-------------------

Daily Work History & Materials Used
(By Location)

Period: 8/1/2014 - 8/31/2014
Work: All categories and types

All Assignments
Caldwell County

Work done in Area: Pcts 1 & 4
--

CR 80 BRANDING IRON TR

Date	Work Done	R&B Material Used	Amount Used	Expense
8/5/2014	Applied oil for dust control (0.5 miles) (SS1 - 66.6 Gals.)	SS1 Slow Set Emulsion-Pick up	66.6 gallon(s)	\$167.83

Location Total = \$167.83

CR 185 WITTER RD (From FM 186 to Stoney Daile)

Date	Work Done	R&B Material Used	Amount Used	Expense
8/13/2014	Hauled off brush			

CR 186 OLD KELLEY RD (Bridge to CR 185)

Date	Work Done	R&B Material Used	Amount Used	Expense
8/5/2014	Hauled off brush			
8/12/2014	Bladed surface (1.5 miles)			

Material Total for this Area = \$167.83

Daily Work History & Materials Used
(By Location)

Period: 8/1/2014 - 8/31/2014
Work: All categories and types

All Assignments
Caldwell County

Work done in Area: Pcts 2 & 3
--

CR 112 CALLIHAN RD (From CR 115 to San Marcos Hwy.)

Date	Work Done	R&B Material Used	Amount Used	Expense
8/1/2014	Patched road surface (2.9 miles) (Type D - 1/2 T.)	Type D Cold Mix	0.5 ton(s)	\$31.00
			Location Total =	\$31.00

CR 114 MINERAL SPRINGS RD (FM 671 to CR 115)

Date	Work Done	R&B Material Used	Amount Used	Expense
8/13/2014	Repaired wash (Type A - 12 T.)	Type A Black Base	12 ton(s)	\$720.00
8/20/2014	Bladed surface; added base (0.1 miles) (3/4" base - 60 T.)	3/4" base to dust	60 ton(s)	\$960.00
8/21/2014	Bladed surface; added base (0.1 miles) (3/4" base - 60 T.)	3/4" base to dust	60 ton(s)	\$960.00
			Location Total =	\$2,640.00

Material Total for this Area = \$2,671.00

Daily Work History & Materials Used
(By Location)

Period: 8/1/2014 - 8/31/2014
Work: All categories and types

All Assignments
Caldwell County

Work done in Area: County

(location not on list)

Date	Work Done	R&B Material Used	Amount Used	Expense
8/15/2014	Installed "No Parking"	#30901 - 10' Green U-Channel Post	1 each	\$19.59
		No Parking Here to Bridge	1 each	\$11.75
			Location Total =	\$31.34
Material Total for this Area =				\$31.34
Material Total for all Areas =				\$179,474.85

Equipment Maintenance Details

Equipment: All types
 Maintenance: All categories
 Personnel: All personnel

Caldwell County
 All assignments
 8/1/2014 - 8/31/2014

District Attorney's Office

DA2 Pick-up 2002 Ford F150 (District Attorney)

Date	Maintenance Category	When	Personnel
8/29/2014	Routine service	232901 miles	John Franklin
	Engine	AF1615 (1) air filter, PH820 (1) oil filter, 15W40 (6.5) oil, 31-22 (2) wiper blades	

Heavy equipment

G-10 Graders - 8332 1997 Gallion 830 (SN#V03623)

Date	Maintenance Category	When	Personnel
8/26/2014	Routine service	10508 hours	Mike Cheatham
	Miscellaneous	GB44017 (2) cutting blades - stock	

G-16 Graders - 8332 2004 Cat 120-H

Date	Maintenance Category	When	Personnel
8/25/2014	Repair work	7561 hours	Mike Cheatham
	Miscellaneous	GB44017 (2) cutting blades - stock	

G-17 Graders - 8332 2004 Cat 120-H

Date	Maintenance Category	When	Personnel
8/29/2014	Routine service	6578 hours	Donnie Barker
	Engine	15-40 (5 gal.) oil, 46476 (1) air filter outter, 46477 (1) air filter inner, 33787 (1) fuel filter, 33640 (1) fuel, 46689 (1) cabin air, 24314 (2) cabin air, 51792 (1) oil filter, 57720 (1) trans filter, 51197 (1) hydro filter - all stock	

G-18 Graders - 8332 2004 Cat 120-H

Date	Maintenance Category	When	Personnel
8/11/2014	Routine service	7900 hours	Donnie Barker
	Electrical	334-5409 (1) turn lamp assy - stock	
	Engine	46689 (1) cabin filter, 24314 (2) cabin air, 46476 (1) outter air filter, 46477 (1) inner air, 533640 (1) fuel filter, 51792 (1) oil filter, 33787 (1) fuel filter, 57720 (1) hydraulic trans filter, 57197 (1) hydraulic filter, 15-40 (5 gal.) oil	
8/1/2014	Routine service	7890 hours	Mike Cheatham
	Miscellaneous	GB41017 (2) cutting blades - stock	

Equipment Maintenance Details

Equipment: All types
 Maintenance: All categories
 Personnel: All personnel

Caldwell County
 All assignments
 8/1/2014 - 8/31/2014

Light equipment

B1 Loader - Backhoe, Wheel - 8571 2012 John Deere 310SJ

Date	Maintenance Category	When	Personnel
8/18/2014	Routine service	1742 hours	Richard Martinez
	Engine	AT184590 (1) cabin air, AT191102 (1) cabin air, RE504836 (1) oil, AT179323 (1) tran, AT367840 (1) hyd, RE529643 (1) fuel, RE522878 (1) fuel, CG83189 (1) air filter, WIX49190 (1) air filter, all RDO - 15-40 (5 G.) oil stock	

B-3 Loader - Backhoe, Wheel - 8571 2006 John Deere

Date	Maintenance Category	When	Personnel
8/13/2014	Repair work	3888 hours	Donnie Barker
	Engine	AT156445 (1) fuel cap - RDO	

Heavy vehicles

AD-1 Distributor, Asphalt/Truck - 8582/8722 2002 Freightliner

Date	Maintenance Category	When	Personnel
8/27/2014	Repair work	69558 miles	Donnie Barker
	Electrical	7391 HD 31P (2) batteries - stock	
8/21/2014	Routine service	69496 miles	Richard Martinez
	Engine	46744 (1) air filter, 33585XE (1) fuel filter, 51494 (1) hyd filter, 57182 (1) oil filter - all Parts Plus, 15-40 (5 Gal.) oil - stock	
8/18/2014	Repair work	69695 miles	Richard Martinez
	Electrical	GRO55410 (1) lamp assy	

D-1 Truck, Dump - 8720 2009 Ford (8 yd)

Date	Maintenance Category	When	Personnel
8/22/2014	Repair work	72019 miles	Mike Cheatham
	Electrical	LIT FIR 7278P (1) flasher - Oreilly's	

D-10 Truck, Dump - 8722 1997 Ford (12 yd)

Date	Maintenance Category	When	Personnel
8/25/2014	Repair work	385598 miles	Donnie Barker
	Brakes	BW102144N (1) brake valve	
	Engine	304732 (1) A/C Compressor, 303242 (1) A/C clutch, 319309 (1) accumulator (drier), 4C4H19860AA (1) evaporator core, A2249268014 (1) A/C Hose - Grande Truck	

Equipment Maintenance Details

Equipment: All types
 Maintenance: All categories
 Personnel: All personnel

Caldwell County
 All assignments
 8/1/2014 - 8/31/2014

Heavy vehicles

D-10 Truck, Dump - 8722 1997 Ford (12 yd)			
Date	Maintenance Category	When	Personnel
8/12/2014	Repair work	385503 miles	Donnie Barker
	Brakes	640TR1001B (1) brake drum, A32H54881 (1) brake sleeve - Fleet Pride, A853299Q6257 (1) bracket, 2210V7536 (1) brake cam - Grande Ford, 370003A (1) seal - Parts Plus, F2HZ15175L (1) axle seal, G31451-0604 (1) surclor air brake coupling - Truck City	
D-14 Truck, Dump - 8722 2008 Intl (12 yd)			
Date	Maintenance Category	When	Personnel
8/29/2014	Routine service	123439 miles	Donnie Barker
	Electrical	H6024 (1) head light - stock	
D-15 Truck, Dump - 8720 1998 Ford (8 yd)			
Date	Maintenance Category	When	Personnel
8/22/2014	Repair work	162490 miles	Donnie Barker
	Engine	1193075 (1) t-stat, 1957339 (1) gasket, 2W7212 (1) gasket - Holt	
8/8/2014	Routine service	162387 miles	Richard Martinez
	Engine	54664 (1) air filter, 46981 (1) cab air, 57791 (1) oil filter, 33626 (1) fuel filter, 33118 (1) fuel filter	
D-2 Truck, Dump - 8722 2013 International 7500 6x4 12 yd			
Date	Maintenance Category	When	Personnel
8/27/2014	Inspection sticker	23893 miles	Donnie Barker
	Inspection	state inspection - G29766938	
D-3 Truck, Dump - 8722 2013 International 7500 6x4 12 yd			
Date	Maintenance Category	When	Personnel
8/25/2014	Inspection sticker	23731 miles	Donnie Barker
	Inspection	G29766937 (1) state inspection	
D-44 Truck, Tractor - 8792 2008 Freightliner			
Date	Maintenance Category	When	Personnel
8/15/2014	Repair work	180634 miles	Richard Martinez
	Miscellaneous	1 3/8 (1) corner hex	

Equipment Maintenance Details

Equipment: All types
 Maintenance: All categories
 Personnel: All personnel

Caldwell County
 All assignments
 8/1/2014 - 8/31/2014

Heavy vehicles

D-44 Truck, Tractor - 8792 2008 Freightliner			
Date	Maintenance Category	When	Personnel
8/14/2014	Repair work	180588 miles	Mike Cheatham
	Electrical	A06 66807000 (1) PDM Severe SVS Trlr; A06 41786029 (1) Harn Trlr J560 Rcpt 90 - both Freightliner	
	Engine	WIX 49082 (1) cabin air	
D-45 Truck, Tractor - 8792 2008 Freightliner			
Date	Maintenance Category	When	Personnel
8/13/2014	Routine service	177703 miles	Richard Martinez
	Engine	49082 (1) cab air	

Light vehicles

M1 Truck, Pickup - 8802 2013 Ford F250 Supercab			
Date	Maintenance Category	When	Personnel
8/12/2014	Routine service	30077 miles	Richard Martinez
	Engine	FL820S (1) oil filter, 9883 (1) air filter, 5-20 (7.5) oil	
8/6/2014	Routine service	29851 miles	John Franklin
	Wheels	LT265/70R17 (4) transforce AT (Firestone), (8) wheel weights	
M2 Truck, Pickup - 8802 2013 Ford F250 Supercab			
Date	Maintenance Category	When	Personnel
8/8/2014	Routine service	59469 miles	Donnie Barker
	Engine	FL820-5 (1) oil filter, 9883 (1) air filter, 15-20 (7) oil - all stock	
M3 Truck, Pickup - 8802 2013 Ford F250 Supercab			
Date	Maintenance Category	When	Personnel
8/18/2014	Repair work	43836 miles	Richard Martinez
	Electrical	84881 (1) blue light switch	
8/15/2014	Repair work	43729 miles	John Franklin
	Wheels	flat repair	
UNIT -8 Truck, Pickup - 8802 2005 Ford F150			
Date	Maintenance Category	When	Personnel
8/20/2014	Inspection sticker	185503 miles	Richard Martinez
	Inspection	state inspection - G29766936	

Equipment Maintenance Details

Equipment: All types
 Maintenance: All categories
 Personnel: All personnel

Caldwell County
 All assignments
 8/1/2014 - 8/31/2014

Light vehicles

UNIT -8 Truck, Pickup - 8802 2005 Ford F150			
Date	Maintenance Category	When	Personnel
8/7/2014	Repair work	350618 miles	Richard Martinez
	Engine	F3TZ7278A (1) bushing, F57Z7212A (1) tube - Ford	
Unit -9 Truck, Pickup - 8802 2003 Ford F250			
Date	Maintenance Category	When	Personnel
8/28/2014	Repair work	351417 miles	John Franklin
	Wheels	LT265/75R16 (4) Transforce AT Firestone, TR600HP (4) high pressure valve stems, (8) wheel weights	
8/28/2014	Repair work	351417 miles	John Franklin
	Wheels	LT265/75R16 (4) transforce AT Firestone, TR600HP (4) high pressure valve stems, (8) wheel weights	

Tractors & attachments

FT-10 Tractor 1998 New Holland 5610			
Date	Maintenance Category	When	Personnel
8/28/2014	Routine service		Richard Martinez
	Engine	47132449 (1) PTO Safety Switch - Ewald	
	Miscellaneous	0652010330 (2) blades, 0622010330 (2) blades, 0582010330 (2) blades - all stock	
FT-14 Tractor 2007 Zetor 6441.0SR			
Date	Maintenance Category	When	Personnel
8/21/2014	Routine service	2217 hours	Richard Martinez
	Miscellaneous	7555 (2) blades, 7556 (2) blades, 931886 (1) lens	
FT-15 Tractor 2007 Zetor 6441.0SR			
Date	Maintenance Category	When	Personnel
8/26/2014	Repair work	1716 hours	Donnie Barker
	Transmission	62115803 (1) lamp assy, 53256029 (1) slave cylinder, 53255907 (1) clutch master cyl - all Hanson	
FT-16 Mahindra 2012 8560 M Power 4WD			
Date	Maintenance Category	When	Personnel
8/22/2014	Routine service	2395 hours	Donnie Barker
	Engine	006000789F1 (1) air filter, 006013351C1 (1) oil filter, 15-40 (3.5 Gal.) oil - all stock	

Equipment Maintenance Details

Equipment: All types
 Maintenance: All categories
 Personnel: All personnel

Caldwell County
 All assignments
 8/1/2014 - 8/31/2014

Tractors & attachments

FT-16 Mahindra 2012 8560 M Power 4WD			
Date	Maintenance Category	When	Personnel
8/11/2014	Repair work	239 hours	Donnie Barker
	Miscellaneous	pipe (1) 183 Muffler Shop	

Bldg. Maint.

BM-1 Pickup Truck 2008 Chevy (Curtis)			
Date	Maintenance Category	When	Personnel
8/22/2014	Routine service	66249 miles	John Franklin
	Engine	AF1519 (1) air filter, 51036 (1) oil filter, 15W40 (5) oil	

BM2 Van 2012 Ford E150			
Date	Maintenance Category	When	Personnel
8/14/2014	Routine service	13309 miles	John Franklin
	Engine	AF1615 (1) air filter, PH820 (1) oil filter, 15W40 (6) oil	
	Wheels	(8) wheel weights	
8/13/2014	Inspection sticker	13299 miles	Richard Martinez
	Fuel Tanks	G29766935 (1) state inspection	

BM5 Pick-up truck 2009 Chev			
Date	Maintenance Category	When	Personnel
8/18/2014	Routine service	76540 miles	John Franklin
	Engine	AF1519 (1) air filter, PH48 (1) oil filter, 15W40 (6) oil	

Constable

501 Car 2005 Ford Crown Victoria (Constable Pct. 1)			
Date	Maintenance Category	When	Personnel
8/4/2014	Routine service	122754 miles	John Franklin
	Engine	AF1032A (1) air filter, PAF-820 (1) oil filter, 15W40 (6.5) oil	
	Wheels	CK80038 (1) upper control arm, CK80040 (1) upper control arm, K80140 (2) sway bar links	

Equipment Maintenance Details

Equipment: All types
 Maintenance: All categories
 Personnel: All personnel

Caldwell County
 All assignments
 8/1/2014 - 8/31/2014

Constable

904 Car 1998 Ford Crown Victoria (Constable Reserve)

Date	Maintenance Category	When	Personnel
8/12/2014	Routine service	248119 miles	John Franklin
	Electrical	912 (2) light bulbs	
	Engine	AF1032A (1) air filter, PH820 (1) oil filter, 15W40 (6) oil	
	Inspection	G36905707 - state inspection	

Sanitation Dept.

Pick-up 2009 Chev 4wd Ext Cab

Date	Maintenance Category	When	Personnel
8/8/2014	Routine service	15714 miles	Richard Martinez
	Engine	7060 (1) oil filter, 15-40 (6qts.) oil	

Sheriff's Dept.

10 Car 2010 Ford 4 door

Date	Maintenance Category	When	Personnel
8/1/2014	Routine service	114210 miles	John Franklin
	Engine	AF1032A (1) air filter, POF241 (1) oil filter, 15W40 (6.5) oil	
	Inspection	(1) state inspection - G36905705	

112 Mini-Van 2012 Toyota

Date	Maintenance Category	When	Personnel
8/19/2014	Routine service	65108 miles	John Franklin
	Engine	POF5608 (1) oil filter, 15W40 (6) oil	
	Wheels	wheel weights (8)	

208 Car 2002 Ford Crown Victoria (Jail)

Date	Maintenance Category	When	Personnel
8/18/2014	Repair work	216970 miles	John Franklin
	Engine	Kit134 - AC service kit (compression drier, o-rings, schrader valves, condensor, oil, A/C flash), R134A (2.25 lbs.) freon	

302 SUV 2013 Ford Police Interceptor Utility

Date	Maintenance Category	When	Personnel
8/14/2014	Routine service	39000 miles	John Franklin
	Engine	46935 (1) air filter, 57502 (1) oil filter, 15W40 (6) oil	
	Wheels	P245/55R18 (4) Eagle RSA (Goodyear), (8) wheel weights	

Equipment Maintenance Details

Equipment: All types
 Maintenance: All categories
 Personnel: All personnel

Caldwell County
 All assignments
 8/1/2014 - 8/31/2014

Sheriff's Dept.

402 Sports Utility 2014 Ford Police Interceptor

Date	Maintenance Category	When	Personnel
8/25/2014	Routine service	21930 miles	John Franklin
	Engine	46935 (1) air filter, 57502 (1) oil filter, 15W40 (6) oil	

403 Interceptor 2014 Ford Utility

Date	Maintenance Category	When	Personnel
8/22/2014	Routine service	14193 miles	John Franklin
	Engine	46935 (1) air filter, 57502 (1) oil filter, 15W40 (6) oil	
	Wheels	(8) wheel weights	

405 Utility AWD 2014 Ford Police Interceptor

Date	Maintenance Category	When	Personnel
8/21/2014	Routine service	19632 miles	Darius Musgrave
	Engine	46935 (1) air filter, 57502 (1) oil filter, 15W40 (6) oil	

602 Pick-up truck 2006 Ford F150

Date	Maintenance Category	When	Personnel
8/26/2014	Routine service	157160 miles	John Franklin
	Engine	PAF5528 (1) air filter, PH820 (1) oil filter, 15W40 (7) oil	

604 Car 2006 Ford Crown Victoria 4 door

Date	Maintenance Category	When	Personnel
8/6/2014	Routine service		John Franklin
	Engine	AF1032A (1) air filter, PH820 (1) oil filter, 15W40 (6.5) oil	
	Inspection	state inspection G36905706	

607 Car 2006 Ford Crown Victoria 4 door

Date	Maintenance Category	When	Personnel
8/7/2014	Routine service	141050 miles	John Franklin
	Engine	PH820 (1) oil filter, 15W40 (6.5) oil, AF1032A (1) air filter	
	Wheels	P235/55R17 (2) Eagle RSA (Goodyear) - Driving School, TR413 (2) valve stems, (4) wheel weights	

Equipment Maintenance Details

Equipment: All types
 Maintenance: All categories
 Personnel: All personnel

Caldwell County
 All assignments
 8/1/2014 - 8/31/2014

Sheriff's Dept.

8 Car 2010 Ford Sedan			
Date	Maintenance Category	When	Personnel
8/27/2014	Routine service	143581 miles	John Franklin
	Electrical	3057 (2) bulbs	
	Engine	AF1032A (1) air filter, POF241 (1) oil filter, 15W40 (6.5) oil	
808 Pick-up 2008 Chevy Silverado			
Date	Maintenance Category	When	Personnel
8/20/2014	Routine service	87654 miles	John Franklin
	Engine	AF1519 (1) air filter, PH48 (1) oil filter, 15W40 (6) oil	
	Wheels	wheel weights (8)	
9 SUV 2000 Ford Explorer (was Darla's 9-1-1 vehicle)			
Date	Maintenance Category	When	Personnel
8/28/2014	Repair work	165532 miles	Darius Musgrave
	Electrical	MTP-78DT (1) battery	
902 Car 2009 Ford Crown Victoria			
Date	Maintenance Category	When	Personnel
8/29/2014	Repair work	140571 miles	John Franklin
	Miscellaneous	31-22 (2) wiper blades	
8/25/2014	Repair work	140092 miles	John Franklin
	Brakes	680110P (2) front disc rotors, ATD1040AP (1) front disc pad set, 680129P (2) rear disc rotors, ATD931P (1) rear disc pad set	
	Engine	30383 (1) catalytic convertor, 30384 (1) catalytic convertor	
8/11/2014	Routine service	138668 miles	John Franklin
	Engine	AF1032A (1) air filter, POF241 (1) oil filter, 15W40 (6.5) oil	
8/1/2014	Repair work	137588 miles	John Franklin
	Wheels	P235/55R17 (1) tire; (2) wheel weights, (1) valve stem - TR413	
903 Car 2009 Ford Crown Victoria 4 door			
Date	Maintenance Category	When	Personnel
8/13/2014	Routine service	180601 miles	John Franklin
	Engine	AF1032A (1) air filter, POF241 (1) oil filter, 15W40 (6.5) oil	
	Wheels	P235/SFR17 (2) Eagle RSA (Goodyear), TR413 (2) valve stems, (4) wheel weights	

Equipment Maintenance Details

Equipment: All types
 Maintenance: All categories
 Personnel: All personnel

Caldwell County
 All assignments
 8/1/2014 - 8/31/2014

Sheriff's Dept.

CID3 SUV 2010 Ford Escape XLT

Date	Maintenance Category	When	Personnel
8/14/2014	Routine service	75650 miles	John Franklin
	Engine	PAF5841 (1) air filter, 57502 (1) oil filter, 15W40 (6) oil	

SHERIFF1 Pick-up 2010 Ford F250 4 door cab

Date	Maintenance Category	When	Personnel
8/14/2014	Repair work	100332 miles	John Franklin
	Steering	8C3Z3E651E (1) steering Damknar	
	Wheels	AC3Z3A116A (1) track bar bushing	

TF2 Pick-up truck Ford F150

Date	Maintenance Category	When	Personnel
8/18/2014	Repair work	151668 miles	Darius Musgrave
	Electrical	3L3Z11661MP (1) headlight switch knob	

Service Request / Work Order History
(Pending and Completed by Location)

Assignment: All
8/1/2014 - 8/31/2014
All Types of Work
All Locations in All Areas

Caldwell County

Precinct 1: County Roads

Location	WO Date	WO#	Type of Work	Caller / Source	Completed
CR 186 OLD KELLEY RD (CR 185 to E.FM 20)	8 /1 /2014	1226	Repair driveway entrance 08-05- added oil on CR 80/the drive is good	Joe Roland	8/5/2014
CR 209 BRUSHY BRANCH RD	8 /8 /2014	1229	Trim brush or trees	Mrs. Simmons	8/14/2014
CR 215 WESTWOOD RD	8 /27/2014	1240	Other right-of-way work	Oscar Fogel	8/28/2014

Precinct 2: County Roads

Location	WO Date	WO#	Type of Work	Caller / Source	Completed
CR 134 MULECREEK RD (CR 133 to Gonzales Cty Line)	8 /18/2014	1235	Trim brush or trees	John John Grind	
CR 138 MCNEIL CREEK RD	8 /27/2014	1243	Trim brush or trees	Diane W/ Luling ISD School Dist.	8/29/2014
CR 144 ROLLING OAKS DR	8 /27/2014	1242	Trim brush or trees	Diane W/ Luling School	8/29/2014
CR 152 CHALK RD	8 /18/2014	1234	Blade surface 09-08-14 2nd Request	William Brown	
CR 158 TAYLORSVILLE RD (FM 86 to FM 713)	8 /27/2014	1241	Clear debris or fallen tree	Mike Rinehart	8/28/2014
CR 160 OLD COLONY LINE RD (E.FM 20 to FM 713)	8 /25/2014	1237	Blade surface	Mary Ann	8/26/2014

Precinct 3: County Roads

Location	WO Date	WO#	Type of Work	Caller / Source	Completed
CR 107 DICKERSON RD	8 /26/2014	1239	Blade; Add material	Andrea Reyna	8/27/2014
CR 111 POLITICAL RD (Dead End)	8 /19/2014	1236	Blade surface		8/20/2014
CR 238 WILLIAM PETTUS RD	8 /28/2014	1244	Trim brush or trees	Tigen	
CR 288 FOURTH ST	8 /5 /2014	1228	Trim brush or trees	Dwayne Duggins	8/6/2014

Service Request / Work Order History
(Pending and Completed by Location)

Assignment: All
8/1/2014 - 8/31/2014
All Types of Work
All Locations in All Areas

Caldwell County

Precinct 4: County Roads

Location	WO Date	WO#	Type of Work	Caller / Source	Completed
CR 96 SAGE HOLLOW RD	8 /18/2014	1233	Trim brush or trees	Mary Ann /w STS Bus Transportation	8/22/2014
CR 164 TUMBLEWEED TR	8 /4 /2014	1227	Blade surface 08-06 - added base	Ledesma	8/6/2014
CR 167 CHAMBERLIN RD	8 /18/2014	1232	Trim brush or trees	Jo Swiger	8/25/2014
CR 174 LYTTON LN	8 /11/2014	1230	Add base	Randy Seidenberger	8/22/2014
CR 179 HOMANNVILLE TR (FM 1185 to Hwy. 183)	8 /25/2014	1238	Blade surface	Debbie Hernandez	8/26/2014
CR 294 DALE LN	8 /18/2014	1231	Trim brush or trees	JO Swiger	



Homeland Security and Emergency Management

*Commissioners Court Briefing
9/15/2014*

Preplan

- Multiple Meetings with Sheriff and Chief Deputy
- Trip to San Marcos River with Chief Deputy
- Meetings with local citizens
- Meeting with Constable representative
- Communications with nearby Counties EMC's
- Group preplan with Chiefs Association
- Mapping of Event with critical locations identified

GIS Mapping Preplan



FloatFest River Event

- Multi Agency Task Force
 - Caldwell County OEM Command Post on River
 - Caldwell County Sheriff's Office
 - Texas Parks and Wildlife Game Warden
 - Texas Department of Public Safety
 - Chisholm Trail Fire/Rescue Swift Water Rescue Team
 - Martindale Vol Fire Department
 - McMahan Vol Fire Dept Swift Water Rescue Team
 - Delhi Vol Fire Department Logistics Team
 - Southeast Caldwell Volunteer Fire Department
 - TEXSAR (Texas Search and Rescue)
 - Lockhart/Caldwell County EMS

Deployed Resources

- Strategically Placed Rescue Swimmers
- Prepositioned EMS
- Prepositioned FRO (First Responders)
- Sheriff's Officers Patrolling Community
- DPS Task Force on the State Hwys
- TABC Task Force at retail stores
- Helicopter for monitoring activities

Back up Resources

- Additional Rescue Swimmers in Reserve
- Dive Team on Standby
- Search Dogs on Standby
- County Fire Departments on standby

Equipment & Technology

- County Command & Communications Trailer
- 2 - Command Vehicles
- 4 – Fire Apparatus
- 3 – Light Trucks
- 3 – Utility Trailers
- Multiple LE Vehicles
- TEXSAR Helicopter
- 3 – Kayaks
- 1 – Inflatable Swiftwater Boat
- 1 – “Mule” All Terrain Vehicle
- 6 – 800 Mhz Radios from Cache
- 4 – Laptop Computers, WiFi and 2 - Printers
- WebEOC System

Man Power

- Approximately 70 Individuals
- Nearly 1000 Man hours – mostly volunteer
- SO labor cost \$2,031 incremental, but if you count preplanning and management costs that would be closer to \$3,000
- Does not count Constables who were working for the tubing companies

Supplies

- 12 Cases of Water Consumed
- 4 Cases of Gatorade
- 4 Cases of Soft Drinks
- 3 gallons of coffee*
- 100 bags of chips
- 40 lbs of burgers
- 20 lbs of hotdogs or sausage
- 200 snacks

Total Cost Supplies: \$620 (water was donated)

Command Post



Command Post



Swiftwater Team Deploying Kayaks

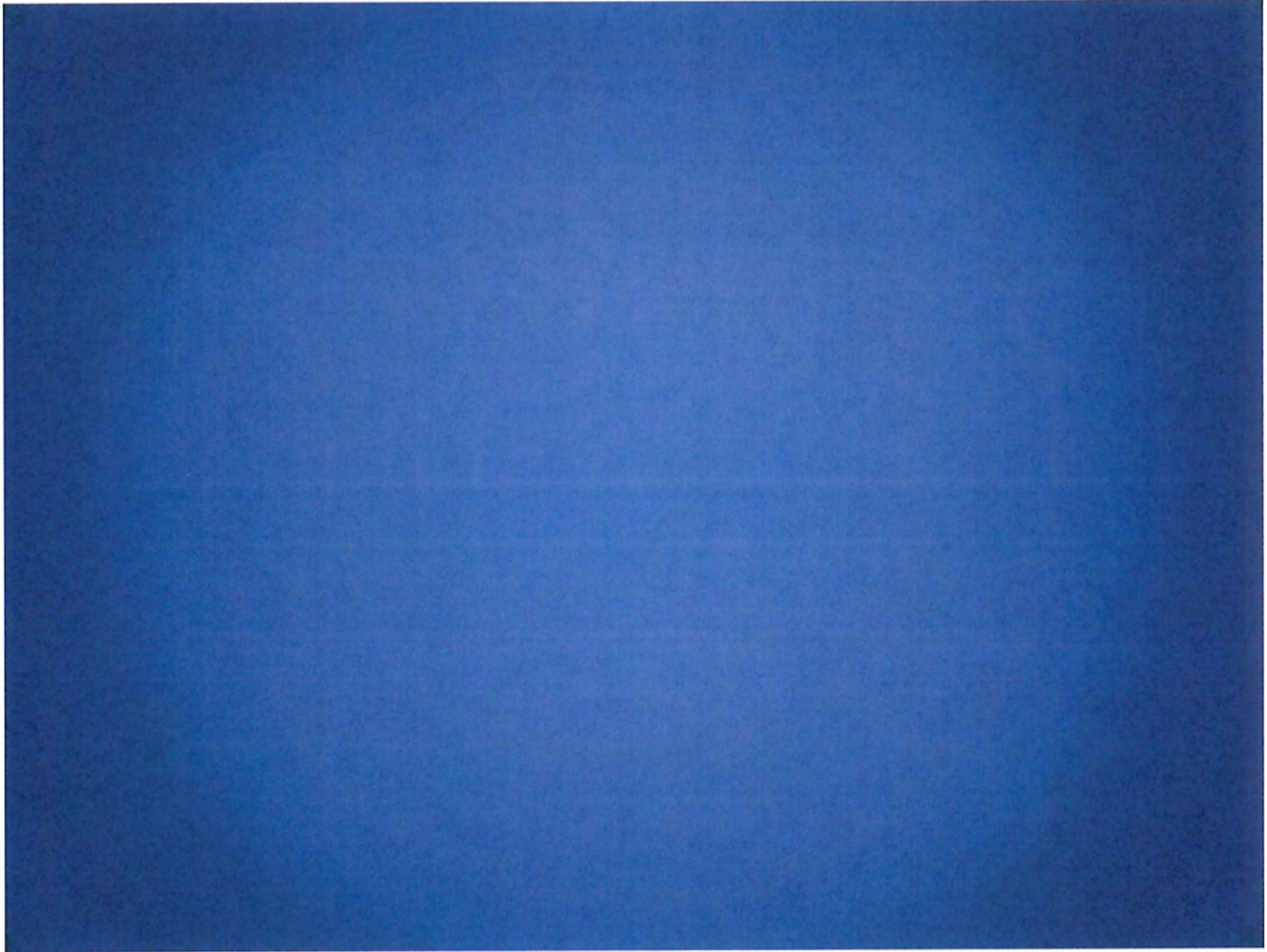


Congested Conditions



Communications Command





**2014.09.15.07 Special Presentations.
None.**

2014.09.15.08 Discussion/Action

regarding Burn Ban for Caldwell County. **Cost:** None; **Speaker:** Martin Ritchey; **Backup:** None.

2014.09.15.09 Discussion/Action to open bids for Aggregate, Asphalt Materials, Flexible Base, Fuel (Regular Unleaded and #2 Diesel), Oil & Lubricants for the budget year 2014-2015. **Cost:** None; **Speaker:** Judge Bonn/Larry Roberson/Dwight Jeffrey; **Backup:** 1.

**CALDWELL COUNTY UNIT ROAD SYSTEM
1700 FM 2720
LOCKHART, TEXAS 78644
(512) 398 – 7269**

INVITATION FOR BIDS

The Unit Road System is seeking bids for Aggregate, Asphalt Materials, Flexible Base, Fuel (Regular Unleaded and #2 Diesel – Low Sulphur), and Oil/Lubricants.

Bids must be received on or before: September 8th, 2014 – 3:30 p.m.

Bids will be publicly opened: September 15th, 2014 – 9:00 a.m.

Bid Submission:

The item bid on should be clearly marked on the front lower left hand corner of the envelope. Bids should show unit pricing and be submitted to the County Auditor's Office, Caldwell County Courthouse, located at 110 S. Main St., 3rd fl., or P.O. Box 98, Lockhart, Texas 78644.

Bids will be opened in a public meeting of Commissioner's Court, located at 1403 Black Jack St., Lockhart, Texas at 9:00 a.m., Monday, September 15th, 2014.

Award:

Successful bidders will be notified after the next Commissioner's Court meeting, September 22nd, 2014. Bid tabulations will be available from the Auditor's office at (512) 398 – 1801.

Commissioner's Court has the right to reject any and all bids.

Contract Period:

October 1st, 2014 thru September 30th, 2015

Economic Adjustment: (Fuel/Diesel Excluded)

Pricing must remain firm for the first three months of the initial contract. Afterwards, the vendor may submit a request for a contract pricing adjustment. The vendor's request must be in the form of a certified statement or affidavit detailing the price adjustment.

If the adjustment is approved, the effective date for the new pricing will be the date the amended documentation is signed by both the county and the vendor.

If no agreement can be reached regarding the price adjustment, the county has the right to seek out other sources.

If either party decides to cancel the contract rather than agree to the pricing adjustment, a (30) day written notice must be provided.

Minimum period of (3) months must elapse between adjustment requests.

AGGREGATE

BID SHEET

1. Bid items must meet TXDOT 2014 Specifications.

At Plant
(U.R.S. picks up)
Price per ton

Aggregate - Grade 3 - 1/2" Cover Stone _____

Aggregate - Grade 4 - 3/8" Cover Stone _____

2. Payment - Net 30 days.

Signature/Date

Address _____

Telephone _____

ASPHALT MATERIAL

BID SHEET

	At Plant (U.R.S. picks up) Price per gal.	Delivered Price per gal.
SS1 SLOW SET EMULSION	_____	_____
HFRS2 RAPID SET EMULSION	_____	_____

1. All material must meet TXDOT 2014 Specifications for construction of highways, streets, and bridges.
2. Quantities used will vary – Caldwell County hereby makes no statement regarding the estimated usage and no stipulated usage can be demanded by the supplier.
3. Payment – Net 30 days.

Signature/Date

Address _____

Telephone _____

FLEXIBLE BASE

BID SHEET

1. Bid items must meet TXDOT 2014 Specifications.

	At Plant (U.R.S. picks up) Price per ton	
Type A Black Base	_____	
Type D Cold Mix	_____	
	At Plant (U.R.S. picks up) Price per ton	Delivered to 6655 Seawillow Road Lockhart, 78644 Price per ton
3/4" Base	_____	_____
1-1/2" Commercial Base	_____	_____

Material should be in stock or made available within a reasonable amount of time.

2. Payment – Net 30 days.

Signature/Date

Address _____

Telephone _____

Contract For Fuel and Diesel

BID SHEET

Type of Fuel	OPIS Price Published (Per Gal.)	Profit Margin For Supplier (Per Gal.)	Date - Bid Price (Per Gal.)
--------------	---------------------------------	---------------------------------------	-----------------------------

Regular Unleaded	_____	_____	_____
------------------	-------	-------	-------

Brand/Trade Name of Product Bid _____

No. 2 Diesel / Low Sulfur	_____	_____	_____
---------------------------	-------	-------	-------

Brand/Trade Name of Product Bid _____

Note: During the term of this contract, fuel prices may increase or decrease based on the weekly average OPIS price from the Austin, TX Rack. The amount designated as the supplier's profit margin per gallon will remain constant for the term of the contract.

Firm

Name/Title

Signature

Telephone

ESTABLISHING YOUR BID PRICE

The base price of fuel will be governed by the Oil Price Information Service (OPIS) average weekly price as published each Thursday, for the Austin, TX Rack (see copy attached.)

The following is an example of how we expect you to submit your bid:

Type of Fuel	OPIS Price Issued 07-03-2014	Profit Margin For Supplier	Bid Price (Per Gal.)
Regular Unleaded	\$2.9537	\$0.02	\$2.9737
No. 2 Diesel (Low Sulfur)	\$3.0197	\$0.02	\$3.0397

1. Averages based solely on OPIS and reseller prices. Terminal excludes: freight, taxes and special discounts.
2. **Make certain that you are providing yourself with a margin that you can live with. This margin cannot be changed during the contract period.** Bids, which are submitted in any form other than that shown in the example above, will be immediately rejected. Caldwell County reserves the right to accept and reject any and all bids.
3. Caldwell County will supply 4,000 gallon tanks for both the gas and diesel.

Austin, TX

OPIS Standard Rack

Daily 07/03/2014

OPIS CBOB Ethanol 10% RVP 7.8 Gross Prices

	Terms	Unl	Mid	Pre
Cenex	b 1-10	2.9775	3.0900	3.3025
Texaco	b N-10	2.9630	3.0550	3.2980
Valero	b 1-10	2.9645	3.0545	3.2445
Shell	b 1-10	2.9372	3.0281	3.2099
Chevron	b 1t45c	2.9630	3.0550	3.2980
Citgo	b 1-10	2.9476	3.0418	3.2574
FlntHlsRs	u N-10	2.9235	3.0323	3.2435
XOM	b 1-10	2.9415	3.0225	3.2715
Valero DS	b 1-10	2.9645	3.0545	3.2445
PSX	b 1-10	2.9545	3.0505	3.2601
OPIS Low		2.9235	3.0225	3.2099
OPIS High		2.9775	3.0900	3.3025
OPIS Average		2.9537	3.0484	3.2630
Branded Low		2.9372	3.0225	3.2099
Branded High		2.9775	3.0900	3.3025
Branded Average		2.9570	3.0502	3.2652
Unbranded Low		2.9235	3.0323	3.2435
Unbranded High		2.9235	3.0323	3.2435
Unbranded Average		2.9235	3.0323	3.2435
Contract Low		2.9235	3.0225	3.2099
Contract High		2.9775	3.0900	3.3025
Contract Average		2.9537	3.0484	3.2630
Cont Branded Low		2.9372	3.0225	3.2099
Cont Branded High		2.9775	3.0900	3.3025
Cont Branded Avg		2.9570	3.0502	3.2652
Cont Unbranded Low		2.9235	3.0323	3.2435
Cont Unbranded High		2.9235	3.0323	3.2435
Cont Unbranded Avg		2.9235	3.0323	3.2435

Copyright 2014, Oil Price Information Service

Austin, TX

OPIS Standard Rack

Daily 07/03/2014

OPIS No. 2 LED Distillate Gross Prices

	Terms	LS	HS	ULS
Cenex	b 1-10	-- --	-- --	3.0350
Texaco	b N-10	-- --	-- --	3.0240
Valero	b 1-10	-- --	-- --	3.0250
Shell	u N-10	-- --	-- --	2.9950
Shell	b 1-10	-- --	-- --	3.0252
Chevron	b 1t45c	-- --	-- --	3.0240
Citgo	b 1-10	-- --	-- --	3.0235
FlntHlsRs	u N-10	-- --	-- --	2.9845
XOM	b 1-10	-- --	-- --	3.0310
Valero DS	b 1-10	-- --	-- --	3.0250
PSX	b 1-10	-- --	-- --	3.0240
OPIS Low		-- --	-- --	2.9845
OPIS High		-- --	-- --	3.0350
OPIS Average		-- --	-- --	3.0197
Branded Low		-- --	-- --	3.0235
Branded High		-- --	-- --	3.0350
Branded Average		-- --	-- --	3.0263
Unbranded Low		-- --	-- --	2.9845
Unbranded High		-- --	-- --	2.9950
Unbranded Average		-- --	-- --	2.9898
Contract Low		-- --	-- --	2.9845

OIL & LUBRICANT BID SHEET

Notice to Bidders: No quantities are shown on this invitation to bid. It is estimated that approximately \$15,000.00 will be spent on lubricants during the year. If the bid form is not completed in its entirety, the bid will be considered non-responsive.

Motor Oil SAE 15W-40 In Bulk (Must meet Caterpillar CJ4 Specifications and be emissions compatible.) Bulk shipment must be delivered in 225-250 gallons per shipment.

Brand/Trade Name of Product Bid _____

Bid Price Per Gallon _____

Hydraulic Fluid In Bulk (Multi-functional fluid for use in hydraulic systems, transmissions, differential and wet brakes that meet or exceed Caterpillar specifications.) Bulk shipment must be delivered in 225-250 gallons per shipment.

Brand/Trade Name of Product Bid _____

Bid Price Per Gallon _____

Chassis Grease (For heavy duty equipment; should reach the maximum temperature of 500 degrees.) Available in cartridge form and 5 gallon cans.

Brand/Trade Name of Product Bid _____

Bid Price Per Cartridge _____

Bid Prices Per 5 Gallon Can _____

Anti-Freeze (Extended Life - 50/50; All Temp)

Brand/Trade Name of Product Bid _____

Bid Price Per 55 Gallon Drum _____

Bid Price Per 1 Gallon _____

Multi-Purpose Automatic Transmission Fluid in Bulk (Must meet Mercon 4 and 5. Bulk shipment must be delivered in 225-250 gallons per shipment.

Brand/Trade Name of Product Bid _____

Bid Price Per Gallon _____

Firm

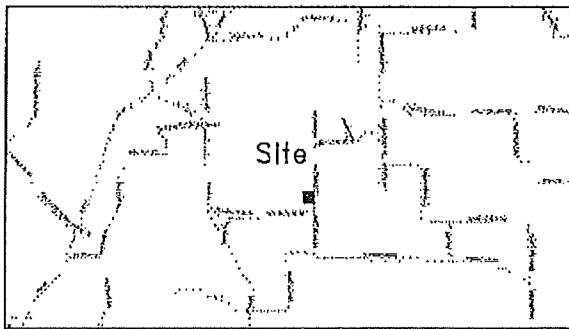
Name/Title

Signature/Date

Telephone

2014.09.15.10 Discussion/Action to approve use of the property around the Scott Annex building for display of gardening vegetables, flowers, and possible rain collection units. Funding provided by Master Gardner Chapter. **Cost:** None; **Speaker:** Commissioner Muñoz; **Backup:** None.

2014.09.15.11 Discussion/Action to approve an Order authorizing the filing of a Final Plat (Short Form Procedure) for Hinds Acres. (3.0 acres out of the James Hinds Survey A-14). **Cost:** None; **Speaker:** Commissioner Buchholtz/Kasi Miles; **Backup:** 1.



Site
Not to Scale

HINDS ACRES

A subdivision of a tract of land called 84,816 acres out of the James Hinds Survey A-14 in Caldwell County, Texas.

LEGAL DESCRIPTION

All of a certain tract or parcel of land situated in the James Hinds Survey A-14 in Caldwell County, Texas and being also a part of a tract of land designated as Tract II called 84,816 acres and conveyed to Frank Carroll Hinds and described in Volume 292 Page 521 of the Deed Records of Caldwell County, Texas, and being more particularly described as follows:

BEGINNING at a railroad tie fence post found in the SE corner of the above mentioned 84,816 acre tract and the West line of Wattsville Road (County Road #140) and the apparent NE corner of a tract of land called 34,303 acres and conveyed to Matthew S. Warren by deed recorded in Volume 593 Page 537 of the Official Records of Caldwell County, Texas for the SE corner this tract. County Road #215 bears it 30 degrees 39 minutes 44 seconds W 5.00 feet.

THENCE S 87 degrees 32 minutes 15" W with the South line of the said 84,816 acre tract and the apparent North line of the above mentioned 34,303 acre tract 365.70 feet to a capped 1/2" iron pin set for in the South line of the said 84,816 acre tract for the SW corner this tract and from said capped 1/2" iron pin set a 1/2" iron pin found used for basis of bearing bears S 88 degrees 41 minutes 42 seconds W 969.52 feet and from said 1/2" iron pin found a second 1/2" iron pin found used for basis of bearing bears S 02 degrees 19 minutes 56 seconds E 1133.27 feet.

THENCE over and across the said 84,816 acre tract for the following Two (2) courses:

- 1) N 00 degrees 37 minutes 01 seconds W 363.42 feet to a capped 1/2" iron pin set for the NW corner this tract.
- 2) N 89 degrees 22 minutes 59 seconds E 365.51 feet to a capped 1/2" iron pin set in the East line of the said 84,816 acre tract and the West line of Wattsville Road for the NE corner this tract.

THENCE S 00 degrees 37 minutes 01 seconds E with the East line of the said 84,816 acre tract and the West line of Wattsville Road 351.64 feet to the place of beginning containing 3,000 acres of land more or less.

STATE OF TEXAS
COUNTY OF CALDWELL

I, FRANK CARROL HINDS, the undersigned owner of the land shown on this plat as described as Tract II and recorded in Volume 292 Page 521 of the Deed Records of Caldwell County, Texas and designated as Lot 1 HINDS ACRES in the James Hinds Survey A14, Caldwell County, Texas, do hereby dedicate to the use of the public forever, the streets and alleys shown hereon, and further reserve to the public all easements for the mutual use of all public utilities desiring to use the same, that any public utility shall have the right to move and to be reconnected at any part of any growth or construction for maintenance or electric use of its respective system in such easements, and further shall have full and uninterrupted access along such easements.

DATE _____ FRANK CARROL HINDS
3378 WATTSVILLE ROAD
LUGING, TX 78648

STATE OF TEXAS
COUNTY OF CALDWELL

Before me, the undersigned authority, personally appeared FRANK CARROL HINDS, known to me to be the person whose name is subscribed to the foregoing document and acknowledged to me that he executed the same for the purpose and considerations stated therein.

When under my hand and seal of office this the _____ day of _____, 20____.

Notary Public in and for the State of Texas

Printed Name of Notary and Notary Stamp

Date Notary Commission Expires

STATE OF TEXAS
COUNTY OF CALDWELL

I, Jerry L. Hinkle, Registered Professional Land Surveyor, State of Texas, hereby certify that this plat is a true and correct representation of a survey made on the ground under my direct supervision and is true and correct to the best of my knowledge. IN WITNESS WHEREOF, my hand and seal, is this _____ day of _____, 20____.

Jerry L. Hinkle
Registered Professional
Land Surveyor #5439

STATE OF TEXAS
COUNTY OF CALDWELL

I, Carl Hildebrand, County Clerk in and for Caldwell County, Texas do hereby certify that this map or plat, with all fees thereon shown hereon, has been duly presented and approved by the Commissioners Court of Caldwell County, Texas on _____, 20____, to be recorded in the Public Records of Caldwell County, Texas.

Carl Hildebrand
County Clerk

STATE OF TEXAS
COUNTY OF CALDWELL

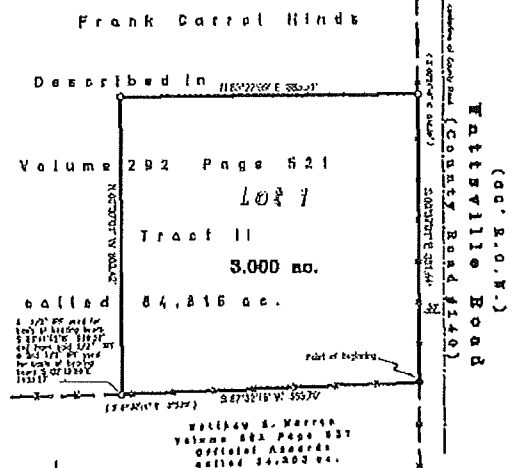
I, Carl Hildebrand, County Clerk in and for Caldwell County, Texas do hereby certify that this foregoing instrument with the certification of authentication was filed for record in my office this _____ day of _____, 20____, at _____ o'clock _____ M and duly recorded on the _____ day of _____, 20____, in the Public Records of Caldwell County, Texas in Volume _____ at Page _____.

Carl Hildebrand
County Clerk

SURVEYOR'S NOTES:

- 1) The Lots shown (FEMA Flood Zone "X") and has been determined to have no special flood hazard, according to FEMA Panel #485550100E dated June 19, 2012.
- 2) This subdivision is located within the boundaries of the existing Independent School District.
- 3) This subdivision is located within Caldwell County Precinct #2.
- 4) This subdivision is serviced by SE Volunteer Fire Department.
- 5) The original deeded calls of record are in parentheses shown on this plat.
- 6) The parcel shown does not lie within the BTJ of any municipality.
- 7) In order to promote safe use of roadways and preserve the conditions of public roadways, no driveway constructed on any lot within this subdivision shall be permitted access onto a publicly dedicated county roadway unless a DRIVEWAY PERMIT has been issued by the appropriate County Road and Bridge Department.
- 8) Lot 1 is not to be occupied until OSSE Permitted or public sewer, water and electricity and roads have been provided and construction is completed and approved by Caldwell County Sanitation Department.
- 9) Utilities Provided by:
Electricity: El Paso Electric Co., Inc.
Water: Pacific Water Supply, Corp.
- 10) RECORD DRAWN BY: Frank Carroll Hinds
DESIGNER OF PLAT: Hinkle Surveyors, PO Box 1027, Lockhart TX 78644 (512) 391-2000
DATE OF PREPARATION: September 2014
SURVEYOR: Jerry L. Hinkle, R.P.L.S. #5439 PO Box 1027, Lockhart TX 78644 (512) 391-2000
- 10) Lot 1 consists of Lot 5 -- 1' in S31662.E

- LEGEND**
- MARKED TIE FENCE OTHER POST FOUND
 - DRIVE 1/2" IRON PIN SET
 - - - FENCE
 - (---) DRIVE DEED CALL
 - WATTSVILLE ROAD

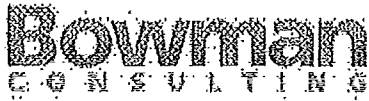


0 100 200 300

Chief Surveyor	Jerry L. Hinkle
Surveyor	Frank Carroll Hinds
County Clerk	Carl Hildebrand
Notary Public	Jerry L. Hinkle

HINKLE SURVEYORS

P.O. Box 1027 1109 S. 11th Street Lockhart, TX 78644
Ph: (512) 391-2000 Fax: (512) 391-2003 Email: jlh@hinklesurveyors.com
www.hinklesurveyors.com File #3362621 No. 16882-03



September 10, 2014

Ms. Kasi Miles
Caldwell County
405 East Market
Lockhart, TX 78644

RE: Hinds Short Form Plat Application

Ms. Miles,

Bowman Consulting received a Short Form Plat for the proposed Hinds Acres Subdivision on September 9, 2014. After review, we have found the plat complies with the requirements of the ordinances. The the plat & application are in conformance with the Caldwell County Development Ordinance, and this application is suitable for consideration.

Sincerely,

A handwritten signature in cursive script that reads "Tracy A. Bratton".

Tracy A. Bratton, P.E.
Bowman Consulting
cc: Commissioner Buchholtz


FRANK C. HINDS
LIC. 04858837
1378 WATTSVILLE RD. 830-875-9661
LULING, TX 78648-4627

88-1640/1149

5982

DATE 8-20-14

PAY TO Caldwell County
THE ORDER OF \$ 400.⁰⁰_{XX}
Four hundred and no/100 DOLLARS

 **CITIZENS State Bank**
200 S. Magnolia • P.O. Box 350
Luling, Texas 78648-0350

MEMO short form plat Frank Hinds



CALDWELL COUNTY SANITATION DEPT.
405 E. MARKET
LOCKHART, TEXAS 78644
(512) 398-1803

4754

DATE 9-10-14

RECEIVED FROM Frank C. Hinds
Four hundred dollars & no/xx
FOR Short form Plat - Hinds Acres

AMOUNT OF ACCOUNT	
THIS PAYMENT	400. ⁰⁰
BALANCE DUE	0.

- CASH
- CHECK
- M.O.

BY Kousi L. Miles *Thank You*



08/20/2014

SUBJECT: REQUEST FOR CREDIT INFORMATION
TO: Credit Department
FROM: Bluebonnet Electric Cooperative, Inc

Account:4000085195
FRANK HINDS
1378 WATTSVILLE
LULING TX 78648-4627

Service Date: From 06/04/2005 to present
Number of Late Payments in the Last Twelve Months: 0

Completed by: NCARD001

Remarks:
Member has service with Bluebonnet and is current.



POLONIA WATER SUPPLY CORPORATION

P. O. BOX 778 LOCKHART, TEXAS 78644

512-559-2030 FAX 512-559-2031

August 20, 2014

Frank Hinds
1378 Wattsville Rd.
Luling, TX 78648

The location at 1378 Wattsville Rd. in Caldwell County is in Polonia Water Supply Corporation's service area and can be serviced with one (1) additional residential service connection when all applicable applications and fees are completed and paid.

Polonia Water Supply Corporation Staff

[Print](#)[Close](#)

RE: Emailing: Hinds Acres

From: **Dwight Jeffrey** (dwight.jeffrey@co.caldwell.tx.us)
Sent: Tue 9/09/14 12:14 PM
To: 'Tracy Bratton' (tbratton@bowmanconsulting.com); 'Hinkle Surveyors' (contact@hinklesurveyors.com); 'Kasi L. Miles' (miles479@hotmail.com)
Cc: 'Alisha San Marco' (asanmarco@bowmanconsulting.com)

Tracy,

There are no safety issues that would prevent permitting for the driveway.

Dwight K. Jeffrey

Caldwell County Road Administrator

(512)398-7269 office/(512)738-2178 cell

1700 FM 2720 Lockhart Tx. 78644

dwight.jeffrey@co.caldwell.tx.us

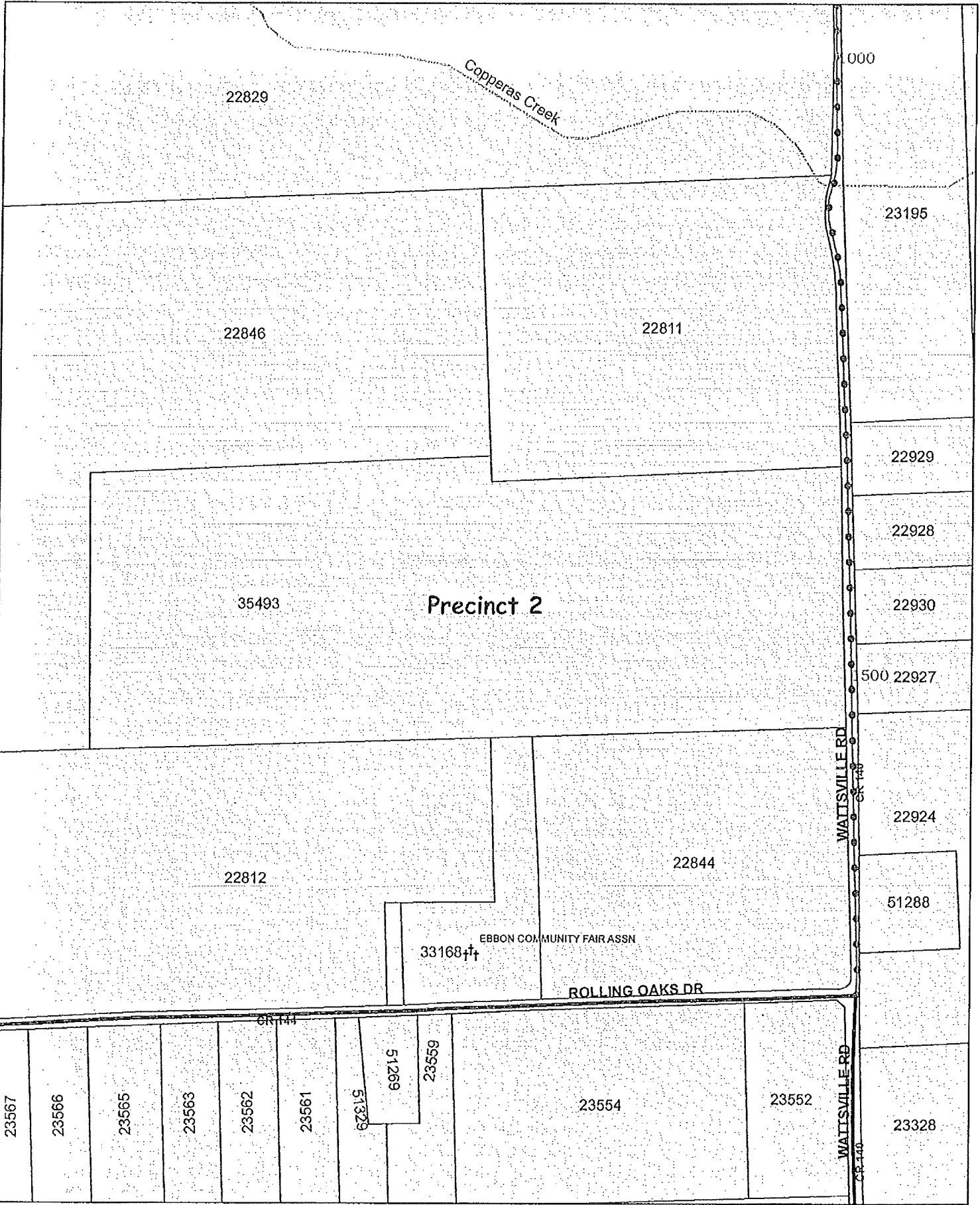
-----Original Message-----

From: Tracy Bratton [mailto:tbratton@bowmanconsulting.com]
Sent: Monday, September 08, 2014 6:14 PM
To: Hinkle Surveyors; Kasi L. Miles (miles479@hotmail.com); Dwight Jeffrey (dwight.jeffrey@co.caldwell.tx.us)
Cc: Alisha San Marco
Subject: RE: Emailing: Hinds Acres

Kasi, we need to confirm with the with the commissioner that he is agreeable to waiving the pre-application conference for this.

Dwight, can you confirm that this property can obtain a driveway permit (that there are not physical features or safety issues that prevent them from being issued a driveway permit)?

Linda, just as with the other short form plat, can you provide evidence of

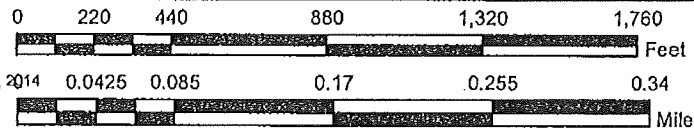


This map is being provided as a courtesy and should only be used as a general guide. It is not a guarantee of location, configuration, size or title. No warranty is expressed or implied for any use for any purpose.

This product is for informational purposes and may not have been prepared for or be suitable for legal, engineering, or surveying purposes. It does not represent an on-the-ground survey and represents only the approximate relative location of property boundaries.

Additionally, this document does not purport to show a boundary or a privately owned property.

Date Printed:
Wednesday, September 10, 2014



Caldwell CAD

Property Search Results > 35493 HINDS FRANK CARROL for Year 2015

Property

Account

Property ID: 35493 Legal Description: A014 HINDS, JAMES, ACRES 84.816
 Geographic ID: 0005014-111-010-00 Agent Code:
 Type: Real
 Property Use Code:
 Property Use Description:

Location

Address: 1378 WATTSVILLE RD Mapsco: 02-328
 LULING, TX 78648
 Neighborhood: LULING ISD RURAL EAST Map ID: G11
 Neighborhood CD: 7707

Owner

Name: HINDS FRANK CARROL Owner ID: 44024
 Mailing Address: 1378 WATTSVILLE RD % Ownership: 100.000000000000%
 LULING, TX 78648-4627
 Exemptions: HS, OV65

Values

(+) Improvement Homesite Value:	+	N/A	
(+) Improvement Non-Homesite Value:	+	N/A	
(+) Land Homesite Value:	+	N/A	
(+) Land Non-Homesite Value:	+	N/A	Ag / Timber Use Value
(+) Agricultural Market Valuation:	+	N/A	N/A
(+) Timber Market Valuation:	+	N/A	N/A

(=) Market Value:	=	N/A	
(-) Ag or Timber Use Value Reduction:	-	N/A	

(=) Appraised Value:	=	N/A	
(-) HS Cap:	-	N/A	

(=) Assessed Value:	=	N/A	

Taxing Jurisdiction

Owner: HINDS FRANK CARROL
 % Ownership: 100.000000000000%
 Total Value: N/A

Entity	Description	Tax Rate	Appraised Value	Taxable Value	Estimated Tax
CAD	Caldwell Appraisal District	N/A	N/A	N/A	N/A
FTM	Farm to Market Road	N/A	N/A	N/A	N/A

GCA	Caldwell County	N/A	N/A	N/A	N/A
SLU	Luling ISD	N/A	N/A	N/A	N/A
WPC	Plum Creek Conservation District	N/A	N/A	N/A	N/A
WUG	Plum Creek Underground Water	N/A	N/A	N/A	N/A
Total Tax Rate:		N/A			
				Taxes w/Current Exemptions:	N/A
				Taxes w/o Exemptions:	N/A

Improvement / Building

Improvement #1:	RESIDENTIAL	State Code:	E Living Area:	1681.5 sqft	Value:	N/A
Type	Description	Class CD	Exterior Wall	Year Built	SQFT	
MA	MAIN AREA	R6	B	1994	1681.5	
OP	COVERED PORCH (20% MAIN AREA)	*		0	140.0	
PC	PATIO COVERED (20% OF MAIN AREA)	*		0	280.0	
STG	ATTACHED STORAGE/UTILITY (40% OF MAIN AREA)	*		0	68.0	
AG	ATTACHED GARAGE (40% OF MAIN AREA)	*		0	758.0	
DSTG	DETACHED STORAGE/UTILITY	SF2		0	36.0	
DSTG	DETACHED STORAGE/UTILITY	SF2		0	120.0	

Land

#	Type	Description	Acres	Sqft	Eff Front	Eff Depth	Market Value	Prod. Value
1	IP	IMPROVED PASTURE	84.4160	3677160.96	0.00	0.00	N/A	N/A
2	HS	HOMESITE	0.4000	17424.00	0.00	0.00	N/A	N/A
3	U	UTILITY	0.0000	0.00	0.00	0.00	N/A	N/A

Roll Value History

Year	Improvements	Land Market	Ag Valuation	Appraised	HS Cap	Assessed
2015	N/A	N/A	N/A	N/A	N/A	N/A
2014	\$124,480	\$236,340	8,530	142,090	\$6,679	\$135,411
2013	\$123,520	\$228,880	5,910	138,470	\$17,214	\$121,256
2012	\$95,830	\$226,710	6,250	111,110	\$0	\$111,110
2011	\$96,450	\$40,440	360	107,410	\$0	\$107,410
2010	\$96,450	\$36,200	360	104,310	\$0	\$104,310
2009	\$97,570	\$36,200	350	105,420	\$0	\$105,420
2008	\$98,670	\$32,790	340	106,230	\$0	\$106,230
2007	\$94,680	\$24,850	310	101,580	\$0	\$101,580
2006	\$94,680	\$24,850	300	101,570	\$0	\$101,570
2005	\$86,100	\$23,090	290	92,840	\$0	\$92,840
2004	\$87,080	\$22,570	300	93,790	\$0	\$93,790
2003	\$88,580	\$22,300	310	95,270	\$0	\$95,270
2002	\$91,290	\$20,210	320	97,830	\$0	\$97,830
2001	\$93,830	\$15,040	300	95,330	\$0	\$95,330
2000	\$92,970	\$12,280	300	94,250	\$0	\$94,250
1999	\$91,360	\$14,250	330	92,830	\$0	\$92,830
1998	\$88,560	\$14,000	320	90,000	\$0	\$90,000
1997	\$89,440	\$13,250	320	90,820	\$0	\$90,820


1996	\$87,210	\$11,500	310	88,440	\$0	\$88,440
1995	\$65,070	\$11,000	310	66,260	\$0	\$66,260

Deed History - (Last 3 Deed Transactions)

#	Deed Date	Type	Description	Grantor	Grantee	Volume	Page	Deed Number
1	1/12/1995 12:00:00 AM	SWD	SPECIAL WARRANTY DEED	HINDS DOROTHY	HINDS FRANK CARROL	121	59	0

Tax Due

Property Tax Information as of 09/10/2014

Amount Due If Paid on: 

Year	Taxing Jurisdiction	Taxable Value	Base Tax	Base Taxes Paid	Base Tax Due	Discount / Penalty & Interest	Attorney Fees	Amount Due
2013	Farm to Market Road	\$111,256	\$0.12	\$0.12	\$0.00	\$0.00	\$0.00	\$0.00
2013	Caldwell County	\$111,256	\$664.47	\$664.47	\$0.00	\$0.00	\$0.00	\$0.00
2013	Luling ISD	\$96,256	\$801.91	\$801.91	\$0.00	\$0.00	\$0.00	\$0.00
2013	Plum Creek Conservation District	\$111,256	\$24.48	\$24.48	\$0.00	\$0.00	\$0.00	\$0.00
2013	Plum Creek Underground Water	\$121,256	\$26.68	\$26.68	\$0.00	\$0.00	\$0.00	\$0.00
2013 TOTAL:			\$1517.66	\$1517.66	\$0.00	\$0.00	\$0.00	\$0.00
2012	Farm to Market Road	\$101,110	\$0.10	\$0.10	\$0.00	\$0.00	\$0.00	\$0.00
2012	Caldwell County	\$101,110	\$666.82	\$666.82	\$0.00	\$0.00	\$0.00	\$0.00
2012	Luling ISD	\$86,110	\$805.71	\$805.71	\$0.00	\$0.00	\$0.00	\$0.00
2012	Plum Creek Conservation District	\$101,110	\$21.23	\$21.23	\$0.00	\$0.00	\$0.00	\$0.00
2012	Plum Creek Underground Water	\$111,110	\$23.33	\$23.33	\$0.00	\$0.00	\$0.00	\$0.00
2012 TOTAL:			\$1517.19	\$1517.19	\$0.00	\$0.00	\$0.00	\$0.00
2011	Farm to Market Road	\$97,410	\$0.10	\$0.10	\$0.00	\$0.00	\$0.00	\$0.00
2011	Caldwell County	\$97,410	\$626.14	\$885.42	\$0.00	\$0.00	\$0.00	\$0.00
2011	Luling ISD	\$82,410	\$739.75	\$739.75	\$0.00	\$0.00	\$0.00	\$0.00
2011	Plum Creek Conservation District	\$97,410	\$19.48	\$19.48	\$0.00	\$0.00	\$0.00	\$0.00
2011	Plum Creek Underground Water	\$107,410	\$21.48	\$21.48	\$0.00	\$0.00	\$0.00	\$0.00
2011 TOTAL:			\$1406.95	\$1666.23	\$0.00	\$0.00	\$0.00	\$0.00
2010	Farm to Market Road	\$94,310	\$0.09	\$0.09	\$0.00	\$0.00	\$0.00	\$0.00
2010	Caldwell County	\$94,310	\$626.14	\$626.14	\$0.00	\$0.00	\$0.00	\$0.00
2010	Luling ISD	\$79,310	\$739.75	\$739.75	\$0.00	\$0.00	\$0.00	\$0.00
2010	Plum Creek Conservation District	\$94,310	\$18.39	\$18.39	\$0.00	\$0.00	\$0.00	\$0.00
2010	Plum Creek Underground Water	\$104,310	\$20.34	\$20.34	\$0.00	\$0.00	\$0.00	\$0.00
2010 TOTAL:			\$1404.71	\$1404.71	\$0.00	\$0.00	\$0.00	\$0.00
2009	Farm to Market Road	\$95,420	\$0.19	\$0.19	\$0.00	\$0.00	\$0.00	\$0.00
2009	Caldwell County	\$95,420	\$626.06	\$626.06	\$0.00	\$0.00	\$0.00	\$0.00
2009	Luling ISD	\$80,420	\$739.65	\$739.65	\$0.00	\$0.00	\$0.00	\$0.00
2009	Plum Creek Conservation District	\$95,420	\$17.65	\$17.65	\$0.00	\$0.00	\$0.00	\$0.00
2009	Plum Creek Underground Water	\$105,420	\$19.50	\$19.50	\$0.00	\$0.00	\$0.00	\$0.00
2009 TOTAL:			\$1403.05	\$1403.05	\$0.00	\$0.00	\$0.00	\$0.00
2008	Farm to Market Road	\$96,230	\$0.29	\$0.29	\$0.00	\$0.00	\$0.00	\$0.00
2008	Caldwell County	\$96,230	\$626.00	\$626.00	\$0.00	\$0.00	\$0.00	\$0.00
2008	Luling ISD	\$81,230	\$739.54	\$739.54	\$0.00	\$0.00	\$0.00	\$0.00

Caldwell CAD - Property Details

2008	Plum Creek Conservation District	\$96,230	\$17.32	\$17.32	\$0.00	\$0.00	\$0.00	\$0.00
2008	Plum Creek Underground Water	\$106,230	\$19.12	\$19.12	\$0.00	\$0.00	\$0.00	\$0.00
2008 TOTAL:			\$1402.27	\$1402.27	\$0.00	\$0.00	\$0.00	\$0.00
2007	Farm to Market Road	\$91,580	\$0.37	\$0.39	\$0.00	\$0.00	\$0.00	\$0.00
2007	Caldwell County	\$91,580	\$625.77	\$694.10	\$0.00	\$0.00	\$0.00	\$0.00
2007	Luling ISD	\$76,580	\$739.00	\$835.50	\$0.00	\$0.00	\$0.00	\$0.00
2007	Plum Creek Conservation District	\$91,580	\$16.30	\$18.08	\$0.00	\$0.00	\$0.00	\$0.00
2007	Plum Creek Underground Water	\$101,580	\$18.28	\$18.28	\$0.00	\$0.00	\$0.00	\$0.00
2007 TOTAL:			\$1399.72	\$1566.35	\$0.00	\$0.00	\$0.00	\$0.00
2006	Farm to Market Road	\$98,570	\$0.49	\$0.49	\$0.00	\$0.00	\$0.00	\$0.00
2006	Caldwell County	\$101,570	\$653.30	\$653.30	\$0.00	\$0.00	\$0.00	\$0.00
2006	Luling ISD	\$86,570	\$1072.60	\$1072.60	\$0.00	\$0.00	\$0.00	\$0.00
2006	Plum Creek Conservation District	\$101,570	\$17.47	\$17.47	\$0.00	\$0.00	\$0.00	\$0.00
2006	Plum Creek Underground Water	\$101,570	\$17.77	\$17.77	\$0.00	\$0.00	\$0.00	\$0.00
2006 TOTAL:			\$1761.63	\$1761.63	\$0.00	\$0.00	\$0.00	\$0.00
2005	Farm to Market Road	\$89,840	\$0.54	\$0.54	\$0.00	\$0.00	\$0.00	\$0.00
2005	Caldwell County	\$92,840	\$584.05	\$584.05	\$0.00	\$0.00	\$0.00	\$0.00
2005	Luling ISD	\$77,840	\$1046.94	\$1046.94	\$0.00	\$0.00	\$0.00	\$0.00
2005	Plum Creek Conservation District	\$92,840	\$15.97	\$15.97	\$0.00	\$0.00	\$0.00	\$0.00
2005	Plum Creek Underground Water	\$92,840	\$17.55	\$17.55	\$0.00	\$0.00	\$0.00	\$0.00
2005 TOTAL:			\$1665.05	\$1665.05	\$0.00	\$0.00	\$0.00	\$0.00
2004	Farm to Market Road	\$90,790	\$0.64	\$0.64	\$0.00	\$0.00	\$0.00	\$0.00
2004	Caldwell County	\$93,790	\$561.34	\$561.34	\$0.00	\$0.00	\$0.00	\$0.00
2004	Luling ISD	\$78,790	\$1028.21	\$1028.21	\$0.00	\$0.00	\$0.00	\$0.00
2004	Plum Creek Conservation District	\$93,790	\$15.48	\$15.48	\$0.00	\$0.00	\$0.00	\$0.00
2004	Plum Creek Underground Water	\$93,790	\$17.73	\$17.73	\$0.00	\$0.00	\$0.00	\$0.00
2004 TOTAL:			\$1623.40	\$1623.40	\$0.00	\$0.00	\$0.00	\$0.00
2003	Farm to Market Road	\$92,270	\$0.74	\$0.74	\$0.00	\$0.00	\$0.00	\$0.00
2003	Caldwell County	\$95,270	\$539.80	\$539.80	\$0.00	\$0.00	\$0.00	\$0.00
2003	Luling ISD	\$80,270	\$1019.43	\$1019.43	\$0.00	\$0.00	\$0.00	\$0.00
2003	Plum Creek Conservation District	\$95,270	\$16.67	\$16.67	\$0.00	\$0.00	\$0.00	\$0.00
2003	Plum Creek Underground Water	\$95,270	\$19.05	\$19.05	\$0.00	\$0.00	\$0.00	\$0.00
2003 TOTAL:			\$1595.69	\$1595.69	\$0.00	\$0.00	\$0.00	\$0.00
2002	Farm to Market Road	\$94,830	\$0.85	\$0.85	\$0.00	\$0.00	\$0.00	\$0.00
2002	Caldwell County	\$97,830	\$528.28	\$528.28	\$0.00	\$0.00	\$0.00	\$0.00
2002	Luling ISD	\$82,830	\$1026.68	\$1026.68	\$0.00	\$0.00	\$0.00	\$0.00
2002	Plum Creek Conservation District	\$97,830	\$17.12	\$17.12	\$0.00	\$0.00	\$0.00	\$0.00
2002 TOTAL:			\$1572.93	\$1572.93	\$0.00	\$0.00	\$0.00	\$0.00

NOTE: Penalty & Interest accrues every month on the unpaid tax and is added to the balance. Attorney fees may also increase your tax liability if not paid by July 1. If you plan to submit payment on a future date, make sure you enter the date and RECALCULATE to obtain the correct total amount due.

Questions Please Call (512) 398-5550

This year is not certified and ALL values will be represented with "N/A".

2014.09.15.12 Discussion/Action to pay Nick Dornak a stipend of \$500 per month effective fiscal year 2014-15 starting 10/1/14 to administer the Caldwell County Feral Hog Task Force with the provision that any grants or donations awarded to or solicited by Mr. Dornak on behalf of the Task force will be issued to Caldwell County and utilized by the County to (1) offset the cost of the stipend, and (2) support continued implementation of the Caldwell County Feral Hog Action Plan. **Cost:** \$500 per month; **Speaker:** Commissioner Muñoz; **Backup:** None.

2014.09.15.13 Discussion/Action to post notice for a public hearing for the consideration of setting a specified speed limit on County Road 172 in Lytton Springs. **Cost:** None; **Speaker:** Commissioner Roland; **Backup:** None.

2014.09.15.14 Discussion regarding update on the status of appraisal report from Menn & Associates for the tax office at 100 E. Market Street and the judicial center at 201 E. San Antonio Street as approved at commissioners court on July 28, 2014. **Cost:** None; **Speaker:** Judge Bonn/Larry Roberson; **Backup:** 1.

Caldwell County
Inspected: 11/30/2009



TEXAS ASSOCIATION of COUNTIES RISK MANAGEMENT POOL



BUILDING DETAIL REPORT

MEMBER DATA

Member: Caldwell County
Member ID: 0280

LOCATION DATA

Location: 081 Tax Office/Adult Probation
Building ID: 0280081001
Building Name: Tax Office/Adult Probation
Street Address: 100 E. Market
City, State, Zip: Lockhart TX 78644
GPS: Latitude: N 29° 53.014 Longitude: W 97° 40.198'

BUILDING DATA

Occupancy Class: Office Building
of Stories: 2 Year Built: 1889
Square Footage: 6,728 Historical: Yes
Basement: No
ISO Class #: 2 ISO Classification: Joisted Masonry
Alarms: Fire & Security
Sprinkler Type: 0 - None Sprinkler %: 0
Roof Geometry: Flat
Roof Pitch: Low (<10 Degree)
Roof Covering: Single Ply Membrane
Roof Anchorage: Nails/Screws-Toe Nailed
Building Shape: Rectangle
Glass Percent: Between 20-60%
Window Protection: No Protection
Foundation: Mat/Slab
Exterior Walls: Stucco on Masonry
Energy Systems: Heating, Air Conditioning, Electrical, Plumbing



Passenger Elevators
1
Freight Elevators
0

INSURABLE VALUES:

Building Replacement Cost:	\$580,500
Building Reproduction Cost:	\$0
Contents:	\$40,900
EDP:	\$17,200
Site Improvements:	\$0
Site Total :	\$638,600

NOTES Building features include: built-in (misc.). Roof condition is average. Unusual exposure = No; Vacant = No.



BUILDING DETAIL REPORT

MEMBER DATA

Member: Caldwell County
 Member ID: 0280

LOCATION DATA

Location: 085 Judicial Center
 Building ID: 0280085001
 Building Name: Judicial Center
 Street Address: 201 E. San Antonio
 City, State, Zip: Lockhart TX 78644
 GPS: Latitude: N 29° 53.062 Longitude: W 97° 40.168'

BUILDING DATA

Occupancy Class: Office Building
 # of Stories: 1 Year Built: 1970
 Square Footage: 10,888 Historical: No
 Basement: No
 ISO Class #: 4 ISO Classification: Masonry Non-Combustible
 Alarms: Fire
 Sprinkler Type: 1 - Wet Sprinkler %: 100
 Roof Geometry: Flat
 Roof Pitch: Low (<10 Degree)
 Roof Covering: Single Ply Membrane
 Roof Anchorage: Anchor Bolts-Metal or Bolt
 Building Shape: Complex
 Glass Percent: Between 5-20%
 Window Protection: No Protection
 Foundation: Mat/Slab
 Exterior Walls: Stone
 Energy Systems: Heating, Air Conditioning, Electrical, Plumbing



Passenger Elevators
 0
 Freight Elevators
 0

INSURABLE VALUES:

Building Replacement Cost:	\$1,001,000
Building Reproduction Cost:	\$0
Contents:	\$60,000
EDP:	\$80,000
Site Improvements:	\$12,400
Site Total :	\$1,153,400

NOTES Building features include: built-in (misc.). Roof condition is average. Unusual exposure = No; Vacant = No. SI = signage and flagpole.

2014.09.15.15 Discussion/Action to suspend all pay raises until we can get an official document in writing by the Sheriff that will not negatively affect our 2014-2015 budget. **Cost:** None; **Speaker:** Commissioner Buchholtz; **Backup:** None.

2014.09.15.16 Adjournment